

DESCRIPTION

Luminoso LED's next-generation Linear High Bay series combines exceptional energy efficiency, superior light uniformity, and long-lasting performance. Designed to minimize contractor costs, it's the perfect solution for both retrofits and new installations. The compact structure simplifies and accelerates installation, while each model's CCT and wattage selectable features enhance flexibility and on-site convenience, reducing the need for excessive inventory.

SPECIFICATIONS

Construction:

- Constructed with durable, one-piece die-cast aluminum housing for unmatched quality and performance.
- Advanced thermal management with isolated LED module and driver ensures extended service life through efficient convection cooling.
- Compact design streamlines installation, reducing labor costs and boosting efficiency.

Optics:

- Color-selectable light engines offer flexibility, allowing CCT adjustment between 4000K and 5000K.
- Versatile lumen packages range from 8,200 to 60,600 lumens to meet diverse lighting needs.
- Prismatic translucent lens enhances light uniformity while effectively reducing glare.

Electrical:

- Compatible with universal input voltage options: 120-277VAC or 347-480VAC.
- Adjustable wattage settings at 100%, 80%, 60%, and 40% for flexible energy management.
- Features standard 0-10V dimming, offering a range from 100% to 10%, with a power factor >90%, THD <20%, and 6kV surge protection.
- Operates in extreme temperatures from -40°C to 50°C (-40°F to 122°F).
- Note: When using an emergency battery, the operating temperature range is 5°C to 50°C (41°F to 122°F).

Controls:

- Optional occupancy sensor or Microwave sensor.

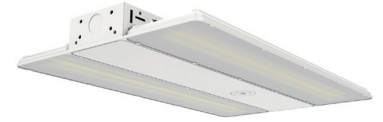
Installation:

- Steel wire rope mount (Standard).
- Surface mount (option).
- Conduit pendant mount (option).

Lifespan:

- Estimated 70,000-hour LED lifespan based
- on IES LM-80 results and TM-21 calculations

Project:	Date
Type:	
Model:	



130W



250W



410W

ORDER INFORMATION

EXAMPLE: ELHB4-WS250-Y-CCTS



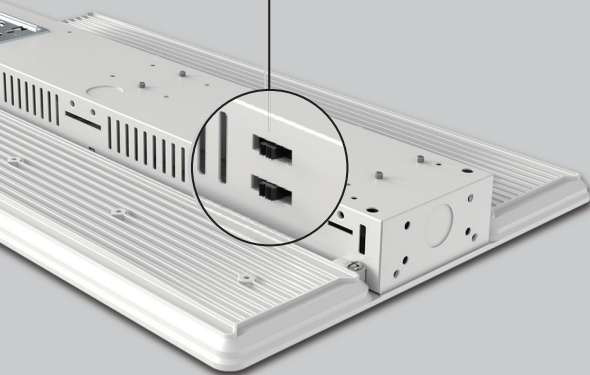
Series	Wattage Selectable	Voltage	CCT Selectable	Motion Sensor	Wire Guard	Emergency Battery Back-up
ELHB4 Linear High Bay	WS130 (130W / 104W / 78W / 52W)	Y 120-277V	CCTS (Color Temp. Selectable) 4000K / 5000K	Blank No sensor	Blank No Wire guard	Blank No EB
	WS250 (250W / 200W / 150W / 100W)	HV 480V		MW Microwave Sensor	WG Wire Guard	EB Emergency Battery Back-up
	WS410 (410W / 328W / 246W / 164W)			PIR Motion Sensor		

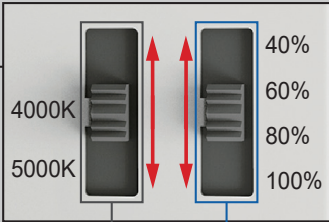
Enter configuration:

Dimensions and values shown are nominal. LuminosoLED continually works to improve products and reserves the right to make changes which may alter the performance or appearance of products.

ELHB4 Linear High Bay
Wattage & Dual CCT Selectable







CCT SELECT

4000K 5000K

Offer two CCT adjustable (4000K, 5000K).

WATTAGE SELECT

40% 60% 80% 100%

Each model supports 4 positions wattage regulation : 100%, 80%, 60%, 40%

CCT AND WATTAGE SELECTABLE

This fixture has the function of adjusting the lumens output and color temperature on-site.

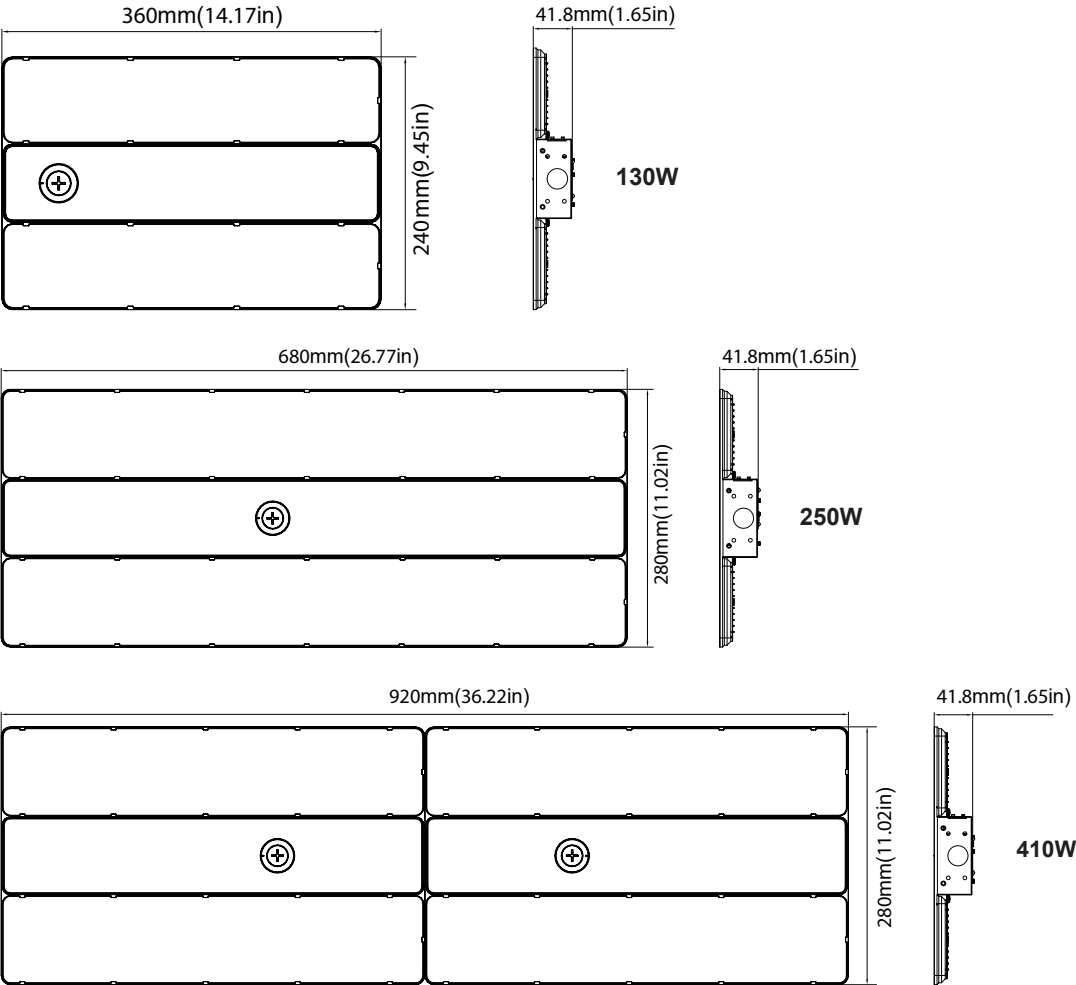
PERFORMANCE DATA

ELHB4 130W					
SETTING	WATTAGE	4000K (80CRI)		5000K (80CRI)	
		LUMENS	LPW	LUMENS	LPW
100%	130W	18,500lm	142 lm/W	18,500lm	142 lm/W
80%	104W	15,200lm	146 lm/W	15,200lm	146 lm/W
60%	78W	12,100lm	155 lm/W	12,100lm	155 lm/W
40%	52W	8,200lm	158 lm/W	8,200lm	158 lm/W

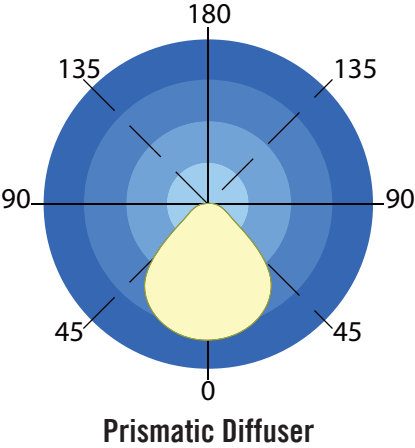
ELHB4 250W					
SETTING	WATTAGE	4000K (80CRI)		5000K (80CRI)	
		LUMENS	LPW	LUMENS	LPW
100%	250W	36,100lm	144 lm/W	36,100lm	144 lm/W
80%	200W	30,200lm	151 lm/W	30,200lm	151 lm/W
60%	150W	24,000lm	160 lm/W	24,000lm	160 lm/W
40%	100W	16,400lm	164 lm/W	16,400lm	164 lm/W

ELHB4 410W					
SETTING	WATTAGE	4000K (80CRI)		5000K (80CRI)	
		LUMENS	LPW	LUMENS	LPW
100%	410W	60,600lm	148 lm/W	60,600lm	148 lm/W
80%	328W	50,000lm	152 lm/W	50,000lm	152 lm/W
60%	246W	38,400lm	156 lm/W	38,400lm	156 lm/W
40%	164W	28,000lm	171 lm/W	28,000lm	171 lm/W




DIMENSIONS



PHOTOMETRICS



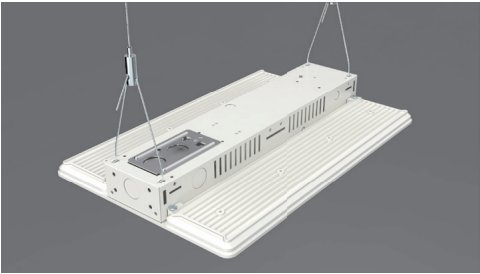
ACCESSORIES / Emergency Battery

		
Emergency Battery 8W 900lm 90min Suitable for 130W (Sold separately)	Emergency Battery 25W 3500lm 90min Suitable for 250W & 410W (Sold separately)	Emergency Battery 30W 4000lm 90min Suitable for 480V (Sold separately)

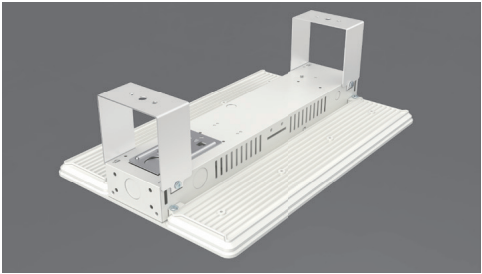
ACCESSORIES

			
Plug-and-Play PIR Sensor 12-24VDC PIR sensor: MSANT12VPH01 (Sold separately)	Plug-and-Play Microwave 12-24VDC PIR sensor: MSANT12VMH01 (Sold separately)	Steel Wire Cable	Wire Guard (Sold separately)

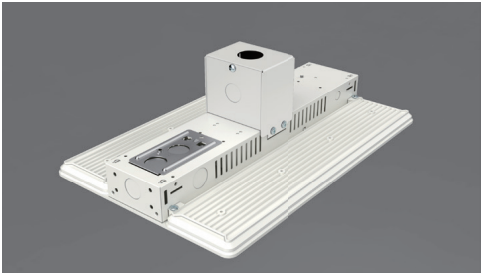
MOUNTING



Steel Wire



Surface Mount



Conduit Pendant Mount