

### DESCRIPTION

The Luminoso EMF 12V Low Voltage Series blends sleek modern design with advanced LED technology. Available in 7W and 12W options and color temperatures of 3000K, 4000K, and 5000K, the EMF delivers high lumen output ideal for a wide range of exterior lighting applications. Offering up to 70% energy savings compared to traditional fixtures, the EMF is the next generation of area lighting.

### FEATURES

- Efficacy: 100 Lm/W
- Delivered Light Output: 700 - 1,200 Lumens
- Input Power: 7, 12 Watts
- CRI: Ra > 70
- CCT: 3000K, 4000K, 5000K
- Input Voltage: 12V
- Power Factor: >0.95
- Frequency: 50/60Hz
- Standard Warranty: 5 Years
- Standard Lifetime: 50,000 hours
- IP Rating: IP66
- Die-cast aluminum housing
- National listing lab tested with IES standards

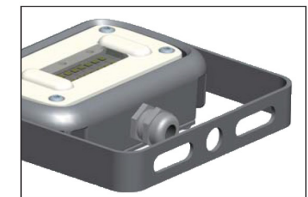
Project:	Date
Type:	
Model:	



Swivel Mount



Trunnion Mount



### ORDER INFORMATION

EXAMPLE: EMF-12W-X-40K-B77-26-BZ



Series	Wattage	Voltage	CCT	Beam	Mount	Finish
EMF Flood Light	<b>7W</b> 7 Watts	<b>X</b> X = 12 Volts	<b>30K</b> = 3000K	<b>B77</b> = 7Hx7V	<b>22</b> = Trunnion	<b>BZ</b> Bronze
	<b>12W</b> 12 Watts		<b>40K</b> = 4000K		<b>26</b> = Swivel Bracket	
			<b>50K</b> = 5000K			
	Requires remote 12V transformer. This fixture is not dimmable*					

Enter configuration:

Dimensions and values shown are nominal. LuminosoLED continually works to improve products and reserves the right to make changes which may alter the performance or appearance of products.

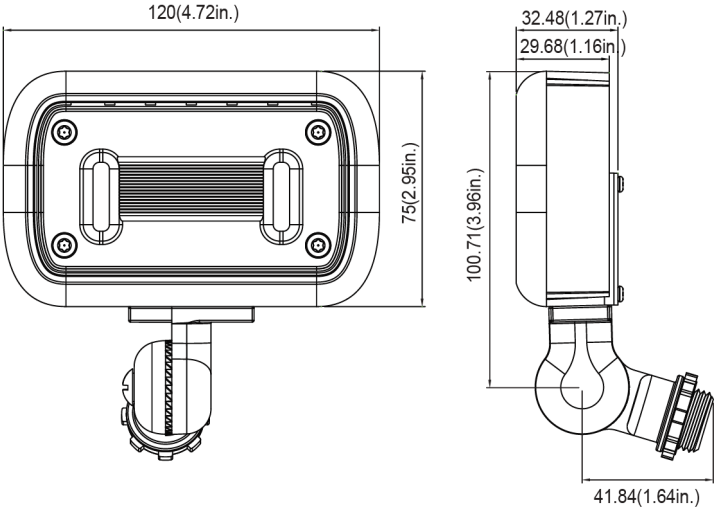
PERFORMANCE DATA

WATTS	BEAM ANGLE	VOLTAGE	2700K(80CRI)		3000K(80CRI)		4000K(80CRI)		5000K(80CRI)	
			LUMENS	LPW	LUMENS	LPW	LUMENS	LPW	LUMENS	LPW
7W	7Hx7V	12V AC/DC	550lm	79 lm/W	600lm	86 lm/W	700lm	100 lm/W	700lm	100 lm/W
12W	7Hx7V	12V AC/DC	900lm	75 lm/W	1000lm	83 lm/W	1100lm	92 lm/W	1100lm	92 lm/W

ELECTRICAL DATA

Number Of Drivers	Driver Current (mA)	Nominal Power (W)	INPUT VOLTAGE (V)	CURRENT (Amps)
1	160	7	12	0.58
1	280	12	12	1.00

MEASUREMENTS



OPTICAL DISTRIBUTION

