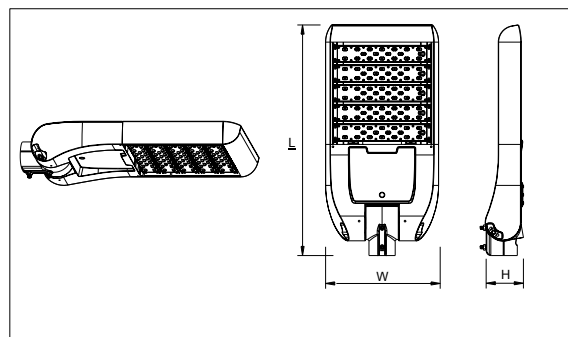


PLEASE READ THESE INSTRUCTIONS CAREFULLY BEFORE INSTALLATION

IMPORTANT INSTALLATION INFORMATION

1. Before commencing installation or maintenance, ensure electricity is switched off at the mains. Installation or maintenance should be carried out by a qualified electrician.
2. The luminaire must not, under any circumstances, be installed in direct contact with flammable materials, and luminaires must not be covered with any flammable materials.
3. Mounting height range of 6 to 15 meters, this model is suitable outdoor lighting.
Ensure there is adequate free air circulation of at least 50cm around the luminaire. It is the installer's responsibility to consider fire risk and take appropriate precautions.

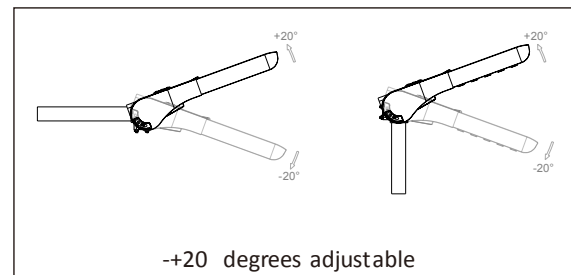
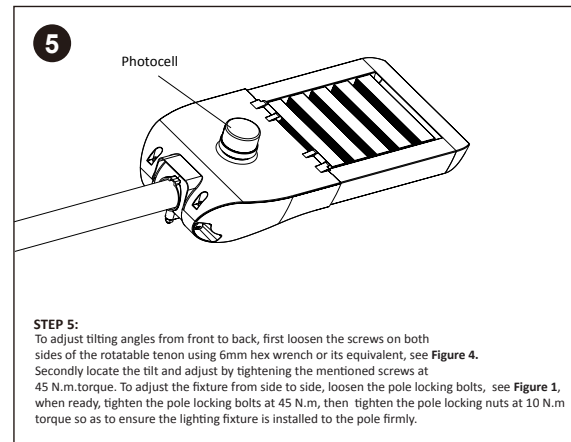
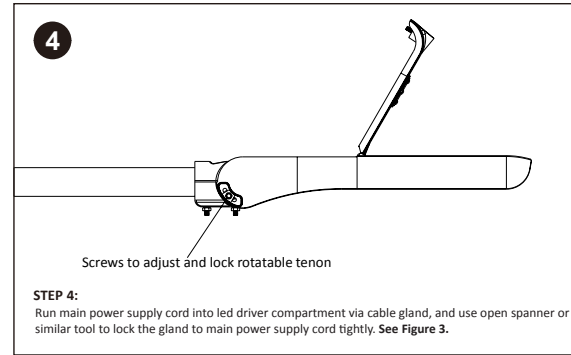
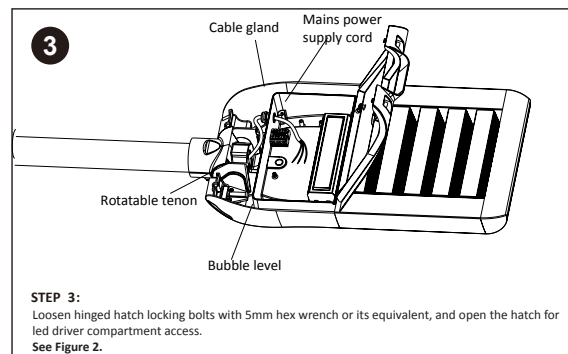
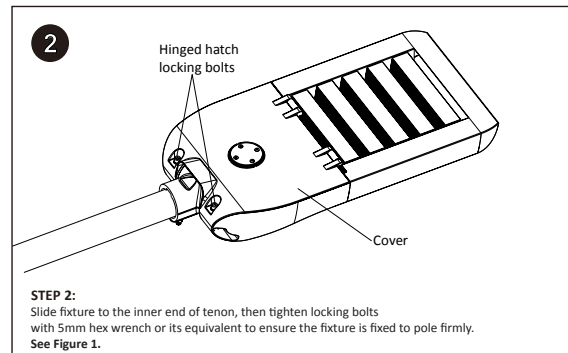
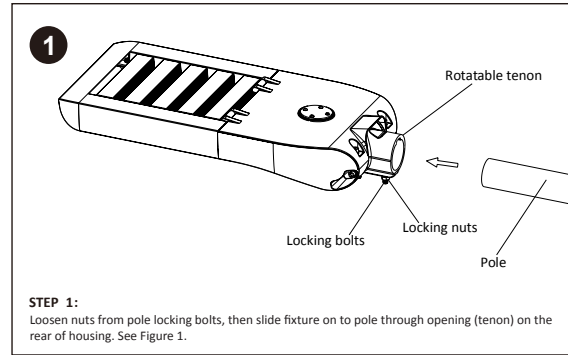


Main specifications:

Model No.	No. of LEDS	System Wattage	Dimensions (L x W x H)	Weight	EPA*	Working Environmen t	IP
LOC-30W	18	30 W	463mm(18.2")x345mm(13.6")x116mm(4.6")	6.46kg(14.2lbs.)	0.46 2	-40℃ - +50℃	IP67
LOC-60W	36	60 W	523mm(20.6")x345mm(13.6")x116mm(4.6")	7.09kg(15.6lbs.)	0.50 3		
LOC-90W	54	90 W	583mm(22.9")x345mm(13.6")x116mm(4.6")	8.22kg(18.1lbs.)	0.54 4		
LOC-120W	72	120 W	643mm(25.3")x345mm(13.6")x116mm(4.6")	8.88kg(19.5lbs.)	0.58 5		
LOC-150W	90	150 W	703mm(27.7")x345mm(13.6")x116mm(4.6")	9.47kg(20.8lbs.)	0.62 8		
LOC-180W	108	180 W	763mm(30.1")x345mm(13.6")x116mm(4.6")	10.83kg(23.8lbs.)	0.67 2		
LOC-210W	126	210 W	823mm(32.4")x345mm(13.6")x116mm(4.6")	11.47kg(25.2lbs.)	0.71 5		
LOC-240W	144	240 W	883mm(34.8")x345mm(13.6")x116mm(4.6")	12.49kg(27.5lbs.)	0.75 7		
LOC-270W	162	270 W	943mm(37.1")x345mm(13.6")x116mm(4.6")	13.12kg(28.9lbs.)	0.80 1		
LOC-300W	180	300 W	1003mm(39.5")x345mm(13.6")x116mm(4.6")	13.88kg(30.5lbs.)	0.84 4		
Input Voltage: 120-277V ~ 50/60Hz z							
The ingress protection of the fixture is IP67 if the mains supply cable's specification is H07RN-F 3*1.5m							

Model I No.	No. of LEDS	System Wattage	Dimensions (L x W x H)	Weight	EPA*	Working Environmen t	IP
LOC-80-HV	36	80 W	523mm(20.6")x345mm(13.6")x116mm(4.6")	7.09kg(15.6lbs.)	0.50 3	- 40°C - + 50°C	IP67
LOC-120-HV	54	120 W	583mm(22.9")x345mm(13.6")x116mm(4.6")	8.22kg(18.1lbs.)	0.54 4		
LOC-160-HV	72	160 W	643mm(25.3")x345mm(13.6")x116mm(4.6")	8.88kg(19.5lbs.)	0.58 5		
LOC-200-HV	90	200 W	703mm(27.7")x345mm(13.6")x116mm(4.6")	10.00kg(22.0lbs.)	0.62 8		
LOC-240-HV	108	240 W	763mm(30.1")x345mm(13.6")x116mm(4.6")	10.83kg(23.8lbs.)	0.67 2		
LOC-280-HV	126	280 W	823mm(32.4")x345mm(13.6")x116mm(4.6")	11.47kg(25.2lbs.)	0.71 5		
LOC-320-HV	144	320 W	883mm(32.4")x345mm(13.6")x116mm(4.6")	12.49kg(27.5lbs.)	0.75 7		
Input Voltage: 347-480V ~ 50/60Hz							
The ingress protection of the fixture is IP67 if the mains supply cable's specification is H07RN-F 3*1.5m							

Installation Instruction & Installation Steps



Safety Notice

WIRING INSTRUCTION

STEP I: Connect the LIVE wire in the main power supply cord to the L marked hole in the terminal block, and tighten the connection properly.

STEP II: Connect the NEGATIVE wire in the main power supply cord to the N marked hole in the terminal block, and tighten the connection properly.

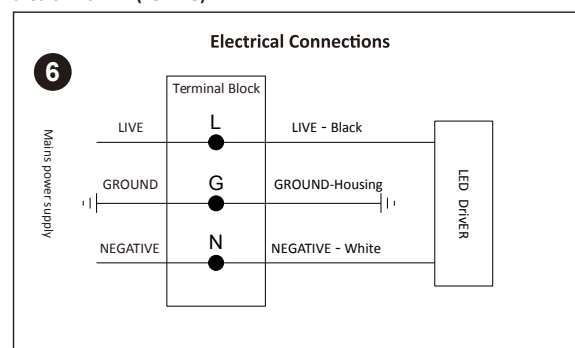
STEP III: Connect the YELLOW/GREEN GROUNDING wire in the main power supply cord to the G marked hole in the terminal block, and tighten the connection properly.



This logo indicates that this product must not be disposed of with other waste. Please recycle used lamps to prevent environmental hazard and threats to human health resulting from improper disposal.

Alternating Current

Input wire H07RN-F 3x1.5mm² (SJOW 3 * 18AWG) or rubber sheathed cable (not supplied). Conductor must have a minimum cross-sectional area of 1.0mm² (18AWG).



STEP 6:
Reference "Electrical Connections" section for completing electrical connections. See Figure 6