

Project		Date
Type		
Model		

SBK Series LED Area Light

Turtle Friendly

Features & Benefits

01. HOUSING

- Die cast aluminum housing.
- Modular design allows for easy installation, replacement and maintenance.
- This design also creates a chimney effect which provides exceptional thermal management.
- IK08 rated.

02. FINISH

- Corrosion resistant polyester powder painted 100µm thickness.
- Meets a 1000-hour salt spray certification per ASTM B117/ ISO 9227:2012.
- Standard colors: Silver, Black, Bronze and White.
- Customized colors are available.

03. LED / OPTICAL ASSEMBLY / FWC / IDA

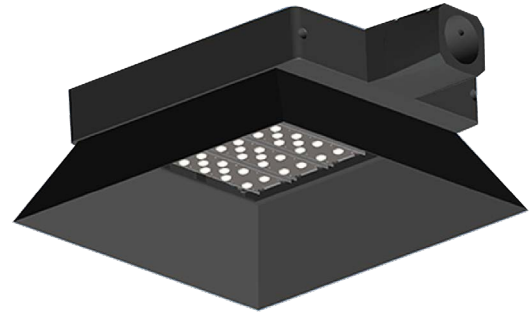
- Each PCB are mounted with a TVS (Transient Voltage Suppressors) to protect the LEDs from voltage transients induced by lightning and other transient voltage events.
- High-uniformity LED optics are constructed of durable optical polycarbonate that is impact and UV resistant.
- The metal plate provides double protection for the LED light engine and prolongs LED optics life.
- Over 20 optical lenses are available for virtually any application.
- Each LED module are 100% tested prior to assembly which is IP67 rated.
- FWC Certification, AMBER light Turtle friendly.
- IDA Certification requires fixture to be fixed mount at 90°

04. MOUNTING

- Side-entry or post-top mounting.
- Tenon mount 90 degree.
- Adjustable for 1 5/8-2 3/8" (42mm-60mm) O.D. tenon.
- Interchangeable with standard brackets.

05. ELECTRICAL / KEY COMPONENTS / CONTROLS

- 120-277VAC and 347-480VAC available.
- Surge protection to 20kV/10kA per ANSI/IEEE C62.41.2-2002 available.
- High quality LEDs, driver and components, e.g. MOLEX, WAGO connectors.
- Multiple lighting control options are available, e.g. DALI, 1-10V.



Horizontal Tenon



ORDER INFORMATION

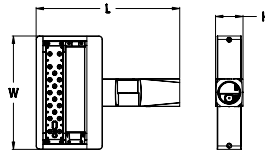
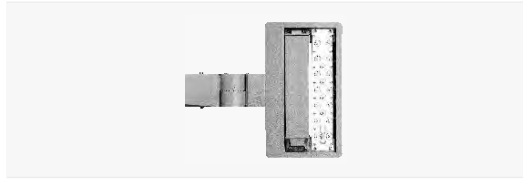
EXAMPLE: SBK-24-120W-AM-3M1-Y-TS-SV



Series	Mount	Wattage	CCT	Optics	Voltage	Shielding	Finish
SBK	24=Horizontal Tenon	30W 60W 90W 120W	AM = Amber	2M1 T5U 3M1 T5V 3L1 T5W 4M1 T5S 4S1 T5X 5M1 T5D 5L1	Y = 120-277V HV = 347-480V**	TS = Turtle Shield	SV = Silver BZ = Bronze** BK = Black** WH = White**

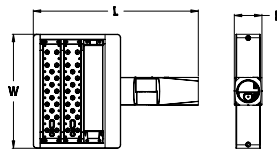
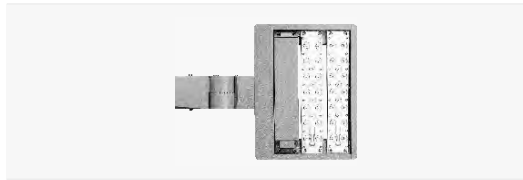
Enter configuration:

** Special Order



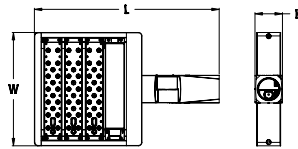
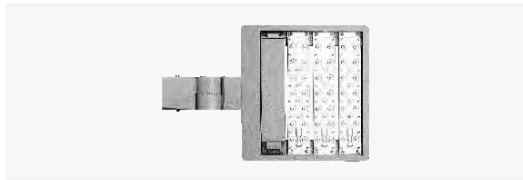
Model	SBK30	Net Weight	4.98kg(10.98lbs)
LED Modules	1	Gross Weight	5.97kg(13.16lbs)
LEDs	18	Product Dimensions	15.94"x12.99"x2.76"
EPA(sq.ft.)	0.283	Carton Dimensions	14.37"x16.34"x6.30"

Model No.	System Power	Voltage	Drive Current	Luminous Flux		Efficacy (lm/W)
				AMBER		
SBK30	31W	120-277VAC	530mA	2,728lm		88



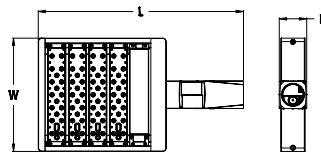
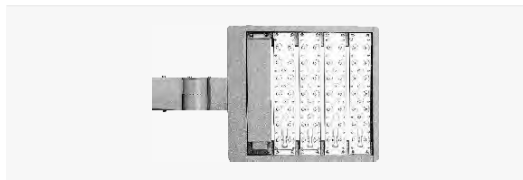
Model	SBK-60 / SBK-80 (347-480V)**	Net Weight	5.79kg(12.76lbs)
LED Modules	2	Gross Weight	6.67kg(14.70lbs)
LEDs	36	Product Dimensions	18.31"x12.99"x2.76"
EPA(sq.ft.)	0.308	Carton Dimensions	16.73"x16.34"x6.30"

Model No.	System Power	Voltage	Drive Current	Luminous Flux		Efficacy (lm/W)
				AMBER		
SBK-60	61W	120-277VAC	530mA	5,368lm		88
SBK-80**	78W	347-480VAC**	700mA	6,786lm		87



Model	SBK-90 / SBK-120 (347-480V)**	Net Weight	6.90kg(15.21lbs)
LED Modules	3	Gross Weight	8.03kg(17.70lbs)
LEDs	54	Product Dimensions	20.67"x12.99"x2.76"
EPA(sq.ft.)	0.336	Carton Dimensions	19.09"x16.34"x6.30"

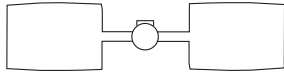
Model No.	System Power	Voltage	Drive Current	Luminous Flux		Efficacy (lm/W)
				AMBER		
SBK-90	87W	120-277VAC	530mA	7,656lm		88
SBK-120**	118W	347-480VAC**	700mA	10,266lm		87



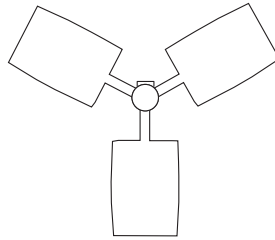
Model	SBK-120 / SBK-160 (347-480V)**	Net Weight	7.79kg(17.17lbs)
LED Modules	4	Gross Weight	8.72kg(19.22lbs)
LEDs	72	Product Dimensions	23.03"x12.99"x2.76"
EPA(sq.ft.)	0.368	Carton Dimensions	21.46"x16.34"x6.30"

Model No.	System Power	Voltage	Drive Current	Luminous Flux		Efficacy (lm/W)
				AMBER		
SBK-120	110W	120-277VAC	530mA	9,680lm		88
SBK-160**						

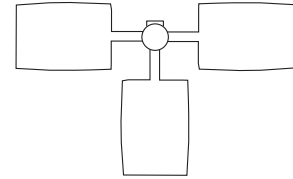
Arm Mount 2 at 180°



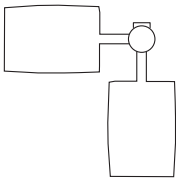
Triple¹
Arm Mount 3 at 120°



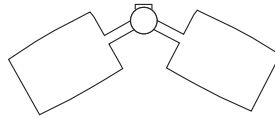
Triple²
Arm Mount 3 at 90°



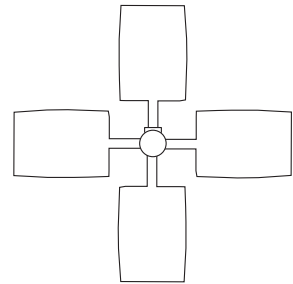
Arm Mount 2 at 90°



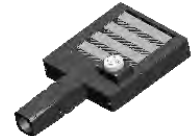
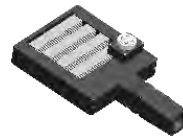
Arm Mount 2 at 120°



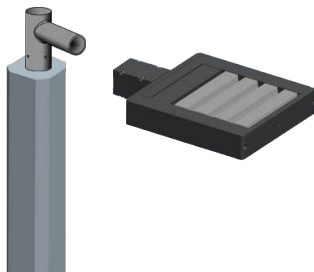
Arm Mount 4 at 90°



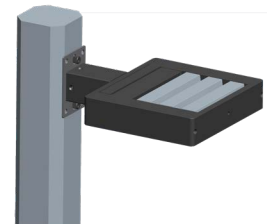
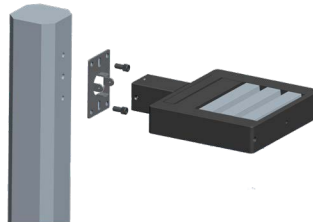
3/5/7 - pin NEMA Receptacle+Shorting Cap/Photocell



Tenon Bracket sold separately



Wall Bracket included



	ISO Plot 		ISO Plot
2M1 Type II Medium		T5W Average beam angle 40°	
3M1 Type III Medium		T5S Average beam angle 60°	
3L1 Type III Long		5M1 Average beam angle 90°	
4S1 Type IV Short		5L1 Average beam angle 120°	
T4M Type IV Medium		T5X Average beam angle 150°	
T5U Average beam angle 10°		T5D Diffuser	
T5V Average beam angle 25°			