

Upon receipt of fixture, thoroughly inspect for any freight damage. All damage should be reported to the delivery carrier. Compare the catalog description listed on the packing slip with the fixture label on the inside of the housing to be sure you have received the correct merchandise.

## READ AND FOLLOW THESE SAFETY INSTRUCTIONS!

- To reduce the risk of death, personal injury or property damage from fire, electric shock, falling parts, cuts/abrasions, and other hazards please read all warnings and instructions included with and on the fixture box and all fixture labels.
- Before installing, servicing, or performing routine maintenance on this equipment, follow these general precautions.
- Commercial installation, service and maintenance of luminaires should be performed by a qualified licensed electrician.
- For Residential installation: If you are unsure about the installation or maintenance of the luminaires, consult a qualified licensed electrician and check your local electrical code.
- Maintenance of the luminaires should be performed by person(s) familiar with the luminaires' construction and operation and any hazards involved. Regular fixture maintenance programs are recommended.
- This fixture is intended to be connected to a properly installed and grounded UL listed junction box.
- It will occasionally be necessary to clean the outside of the refractor/lens. Refractor/lens should be washed in a solution of warm water and any mild, non-abrasive household detergent, rinsed with clean water and wiped dry. Should optical assembly become dirty on the inside, wipe refractor/lens and clean in above manner, replacing damaged gaskets as necessary.
- DO NOT INSTALL DAMAGED PRODUCT! This luminaire has been properly packed so that no parts should have been damaged during transit. Inspect to confirm.
- Any part damaged or broken during or after assembly should be replaced.
- These instructions do not purport to cover all details or variations in equipment nor to provide every possible contingency to meet in connection with installation, operation, or maintenance. Should further information be desired or should particular problems arise which are not covered sufficiently for the purchaser's or owner's purposes, this matter should be referred to manufacturer.

## WARNING RISK OF ELECTRIC SHOCK

- ▶ Disconnect or turn off power before installation or servicing.
- ▶ Verify that supply voltage is correct by comparing it with the luminaire label information.
- ▶ Make all electrical and grounded connections in accordance with the National Electrical Code (NEC) and any applicable local code requirements.
- ▶ All wiring connections should be capped with UL approved wire connectors.

## CAUTION RISK OF INJURY

- ▶ Wear gloves and safety glasses at all times when removing luminaire from carton, installing, servicing or performing maintenance.
- ▶ Avoid direct eye exposure to the light source while it is on.

## WARNING RISK OF BURN

- ▶ Allow lamp/fixture to cool before handling. Do not touch enclosure, lens or light source.
- ▶ Do not exceed maximum wattage marked on luminaire label.
- ▶ Follow all manufacturer's warnings, recommendations and restrictions including but not limited to: driver type, mounting locations/methods, replacement and recycling.
- ▶ Use only lamps that comply with ANSI standards.

## CAUTION RISK OF FIRE

- ▶ Keep combustible and other materials that can burn, away from lamp/lens.
- ▶ Do not operate in close proximity to persons, combustible materials, or substances affected by heat.

## CAUTION RISK OF PRODUCT DAMAGE

- ▶ Never connect components under load.
- ▶ Do not mount or support these fixtures in a manner that can cut the outer jacket or damaged wire insulation.
- ▶ Unless individual product specifications deem otherwise: Never connect an LED product directly to dimmer packs, occupancy sensors, timing devices, or other control devices. LED fixtures must be powered directly off a switched circuit.
- ▶ Unless individual product specifications deem otherwise: Do not restrict fixture ventilation. Allow for some volume of airspace around the fixture. Avoid covering LED fixtures with insulation, foam, or other material that will prevent convection or cooling.
- ▶ Unless individual product specifications deem otherwise: Do not exceed fixtures' maximum ambient temperature.
- ▶ Only use the fixture in its intended location.
- ▶ LED products are polarity sensitive. Ensure proper polarity before installation.
- ▶ Electrostatic Discharge (ESD): ESD can damage LED fixtures. Personal grounding equipment must be worn during all installation or servicing of the unit.
- ▶ Do not touch individual electrical components as this can cause ESD, shorten lamp life, or alter performance.
- ▶ Some components inside the fixture may not be serviceable. If your unit requires service, stop using the unit immediately and contact a manufacturer representative for assistance.
- ▶ Changes or modifications not expressly approved by manufacturer will void the product warranty.
- ▶ Always read the fixtures' complete installation instructions prior to installation for any additional fixture-specific warnings.

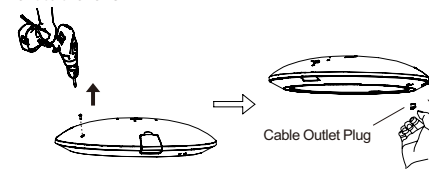
## » Package

1. LED Decorative Post Top Light.
2. Installation Instruction.
3. Installation hardware.

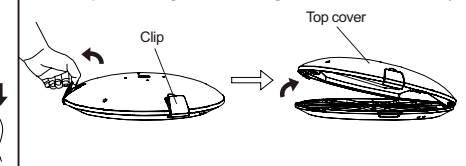
## » Installation instructions

### Post Top Mount (purchased separately)

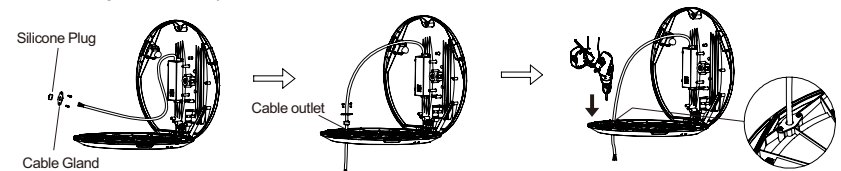
**Step 1:** Unscrew the screw on the top surface of the fixture as shown in the figure. Then remove the Cable Outlet Plug next to the lens.



**Step 2:** Release the two clips on the top of the fixture, then lift the top cover of the fixture upward. (The opening position of the top cover aligns with the light emission direction.)

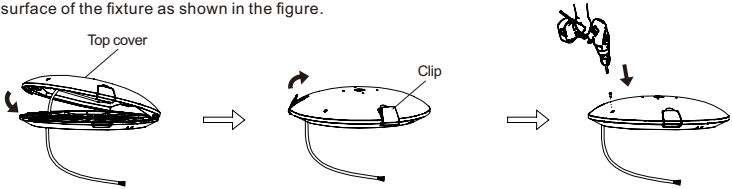


**Step 3:** Slide the Cable Gland and Silicone Plug over the fixture's power cable, thread the cable through the cable outlet as shown in the figure, and finally secure the Cable Gland to the outlet with two screws.

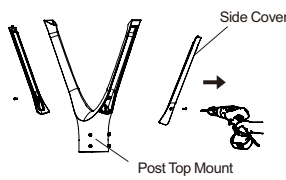


Please read this manual carefully before using the product

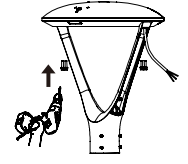
**Step 4:** Close the top cover of the fixture, fasten the clips on the top surface of the fixture, and tighten the screw on the top surface of the fixture as shown in the figure.



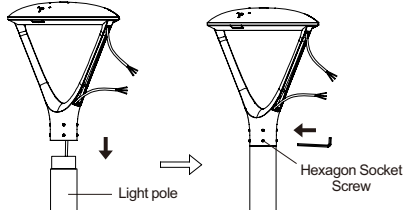
**Step 5:** Unscrew the screws on the two Side Covers of the Post Top Mount and remove the Covers.



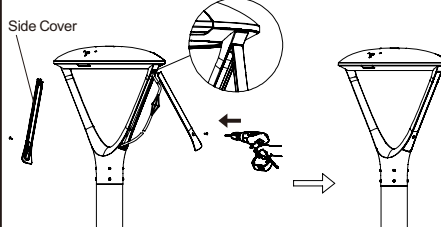
**Step 6:** Pull the fixture's power cable through the Post Top Mount, then secure the Mount to the fixture with four screws.



**Step 7:** Pull the input cable through the Post Top Mount, then fit the fixture onto the light pole and adjust it to the desired lighting direction. Then tighten the Hexagon Socket Screws on the Post Top Mount.

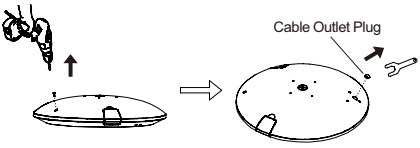


**Step 8:** Connect the fixture's power cable to the input cable, and tighten the screws to refit the Side Covers in place. The installation is then complete.

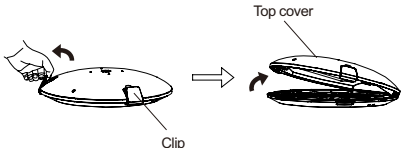


## Pole Mount Arm & Wall Mount

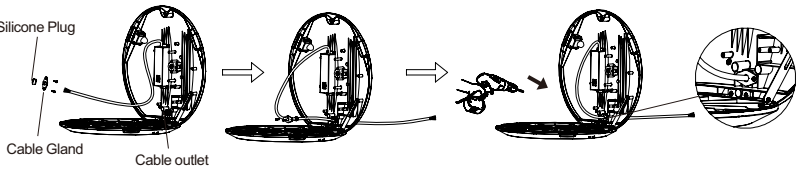
**Step 1:** Unscrew the screw on the top surface of the fixture as shown in the figure. Then remove the Cable Outlet Plug on the top surface of the fixture.



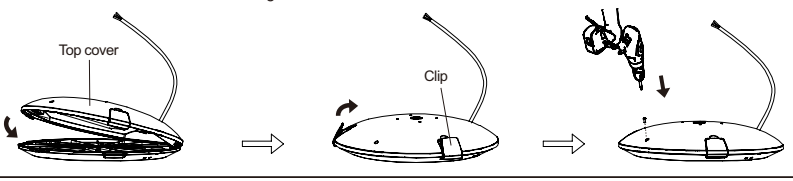
**Step 2:** Release the two clips on the top of the fixture, then lift the top cover of the fixture upward. (The opening position of the top cover aligns with the light emission direction.)



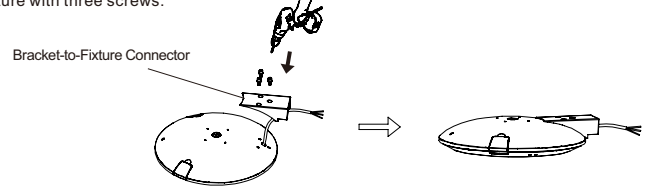
**Step 3:** Slide the Cable Gland and Silicone Plug over the fixture's power cable, thread the cable through the cable outlet as shown in the figure, and finally secure the Cable Gland to the outlet with two screws.



**Step 4:** Close the top cover of the fixture, fasten the clips on the top surface of the fixture, and tighten the screw on the top surface of the fixture as shown in the figure.

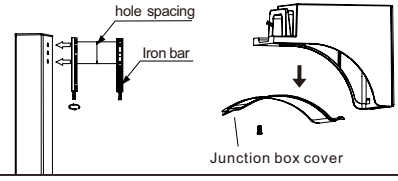


**Step 5:** Pull the fixture's power cable through the Bracket-to-Fixture Connector, then secure the Connector to the top surface of the fixture with three screws.

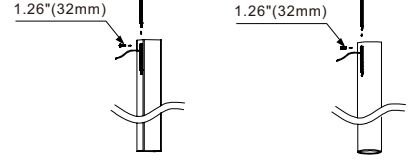


## Pole Mount Arm for Round or Square Poles (purchased separately)

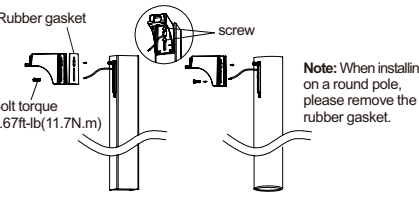
**Step 6:** Unscrew the screws of the iron bar with a screwdriver, adjust the hole spacing of the iron bar in advance according to the hole position on the Square or Round Pole. Remove the junction box cover of the Pole Mount Arm.



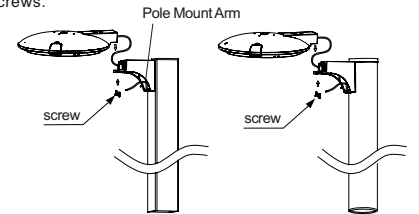
**Step 7:** Fix the iron bar to the inside of the light pole with screws (Note: the screw is only screwed into 1/3 of its length), and lead out the input cable.



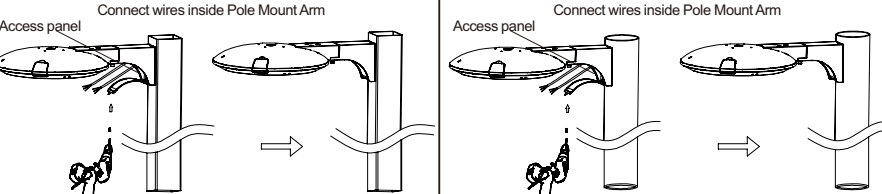
**Step 8:** Pull the rubber gasket and the Pole Mount Arm through the screw and input cable on the light pole. Tighten the screw and then lock the other screw.

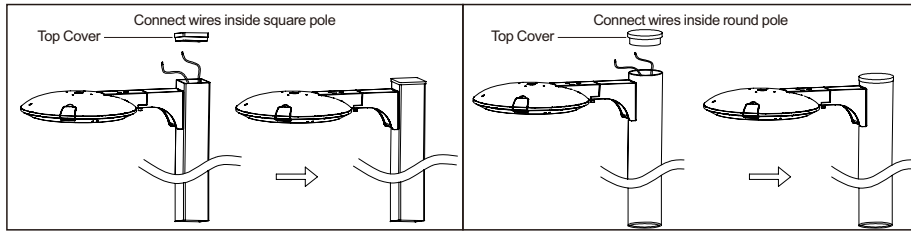


**Step 9:** Pull the fixture's power cable through the Pole Mount Arm, place the fixture onto the Arm, and then tighten the two screws.



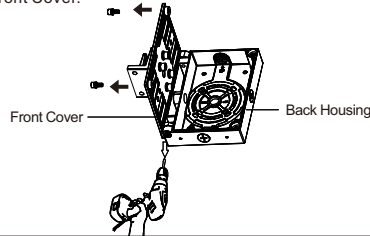
**Step 10:** Pull the fixture's power cable out from the access panel of the Pole Mount Arm for wiring; or pull the cable through the wiring hole into the pole and make connections inside. Then secure the junction box cover by tightening the screws, or close the pole's Top Cover. The installation is then complete.



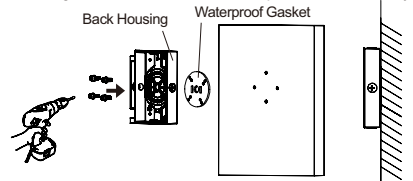


### Wall Mount(purchased separately)

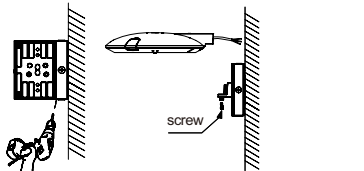
**Step 6:** Unscrew the screws of the Front Cover and remove the Front Cover.



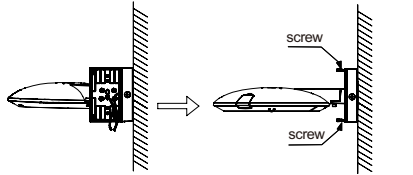
**Step 7:** Attach the Waterproof Gasket to the Back Housing. Secure the Housing directly to the wall with wall anchor holes and appropriate screws. Apply silicone sealant around the Housing where it meets the wall to prevent water entry.



**Step 8:** Attach the Front Cover to the Back Housing and tighten the screws. Then pull the fixture's power cable through the Front Cover, place the fixture onto the Wall Mount, and tighten the two screws.

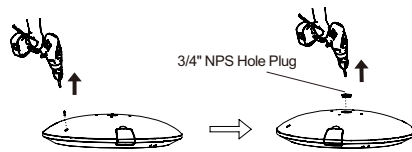


**Step 9:** Connect the input cable to the fixture's power cable. Then tighten the two screws on the Front Cover of the Wall Mount. The installation is then complete.

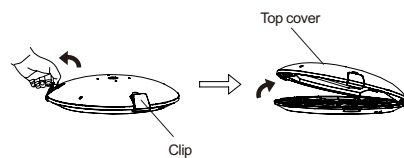


### Surface Mount & Pendant Mount

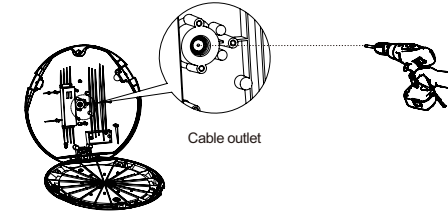
**Step 1:** Unscrew the screw on the top surface of the fixture as shown in the figure. Then unscrew the 3/4" NPS Hole Plug from the top surface of the fixture.



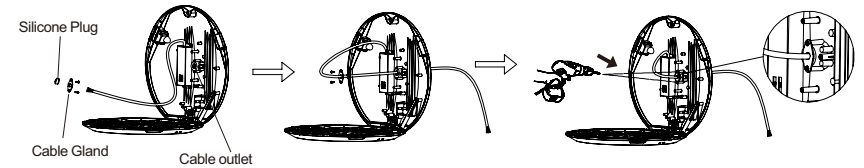
**Step 2:** Release the two clips on the top of the fixture, then lift the top cover of the fixture upward. (The opening position of the top cover aligns with the light emission direction.)



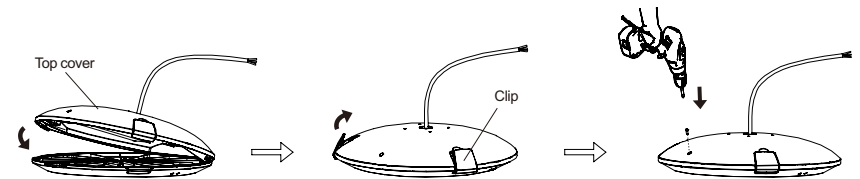
**Step 3:** As shown in the diagram, use an electric drill to drill out the metal sheet at the Cable outlet.



**Step 4:** Slide the Cable Gland and Silicone Plug over the fixture's power cable, thread the cable through the cable outlet as shown in the figure, and finally secure the Cable Gland to the outlet with two screws.

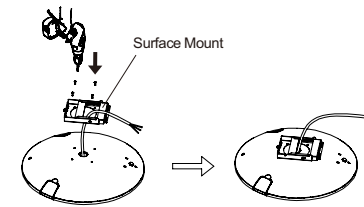


**Step 5:** Close the top cover of the fixture, fasten the clips on the top surface of the fixture, and tighten the screw on the top surface of the fixture as shown in the figure.

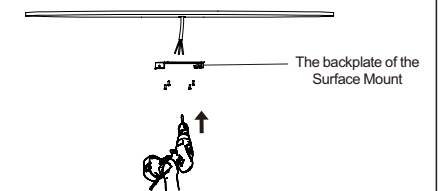


### Surface Mount (purchased separately)

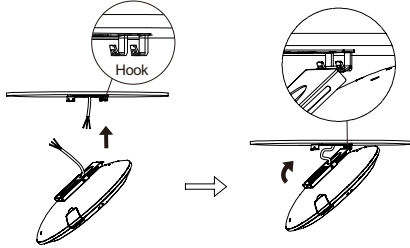
**Step 6:** Pull the fixture's input cable through the Surface Mount, then tighten the four screws to secure the Surface Mount to the top surface of the fixture.



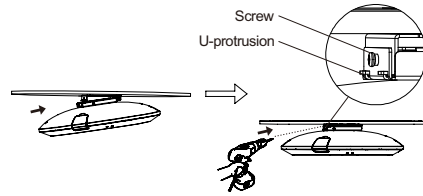
**Step 7:** Adjust the backplate of the Surface Mount to the correct position according to the fixture's desired lighting direction, then mount it on the ceiling.



**Step 8:** Hang the fixture onto the hook on the backplate of the Surface Mount. Then connect the fixture's power cable to the input cable.

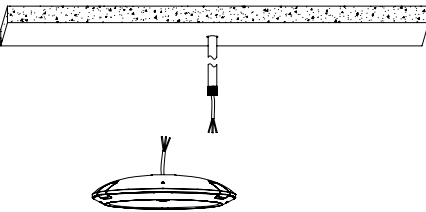


**Step 9:** Push the fixture upward until the Surface Mount on the fixture catches the U-protrusion of the Surface Mount's backplate, then tighten the screw as shown in the figure. The installation is then complete.

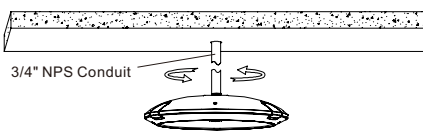


### Pendant Mount (3/4" NPS Conduit Not Included)

**Step 6:** Connect the fixture's power cable to the input cable.



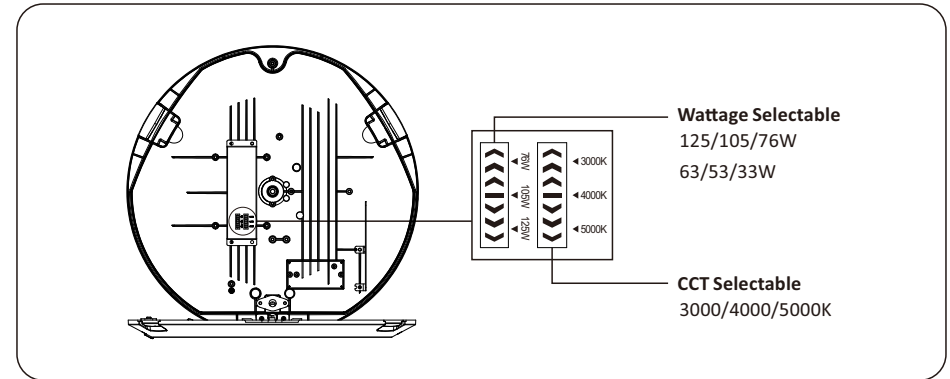
**Step 7:** Screw the fixture into the 3/4" NPS Conduit. The installation is then complete.



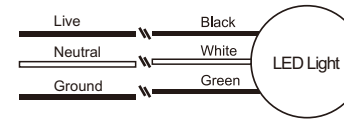
### » Troubleshooting

1. Check that the line voltage at the fixture is correct. Refer to wiring directions.
2. Ensure that the fixture is grounded properly.
3. Be sure the photocell, if used, is functioning properly.

### » Wattage & CCT Selectable



### » Wiring diagram



120-277/347VAC 50/60Hz  
200-480VAC 50/60Hz