

## TCDE Series

LED Retrofit Commercial Down Light W/ Selectable CCT & Power

Project:	Date
Type:	
Model:	

### DESCRIPTION

The Luminoso TCDE Commercial downlight features a color temperature and wattage selectable switch to accommodate nearly any application. It is the ideal product for energy efficient lighting in Non-IC New Construction or retrofit commercial applications.

### TRIM

Self-flanged spun aluminum reflector with frosted lens to shield direct view from LEDs. Trim Size available in 4, 6, 8, and 10 inch with haze reflector.

### LED ENGINE

CCT Selectable: 3000K, 4000K, and 5000K (**CCTS**).  
 CCT Selectable: 3000K, 3500K, and 4000K (**CCTS2**).  
 Wattage Selectable: 10W, 15W, and 20W (**WS1**).  
 Wattage Selectable: 27W, 34W, and 40W (**WS2**).  
 LED COB mounted to aluminum heat sink for maximum life output and thermal management.

### FEATURES

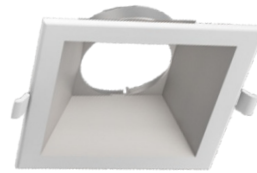
Selectable Kelvin temperature & Wattage.  
 Driver Info: 120-277V, 50/60 Hz  
 LED Life: 50,000 Hours  
 Operating Temperature: -4°F to 113°F  
 Warranty: 5 year limited warranty  
 0-10V dimming



**TCDR**  
(Round)



**TCDR-WW**  
(Round Wall Wash)



**TCDS**  
(Square)



**TCDS-WW**  
(Square Wall Wash)



Series	Selectable Wattage	Selectable CCT	Voltage	Emergency Battery Back-up	Standard Trim Options	Wall Washer Trim Options
TCDE LED Engine	<b>WS1</b> (Wattage Selectable) 10W / 15W / 20W	<b>CCTS</b> (Color Temp. Selectable) 3000K / 4000K / 5000K	Y 120-277V	<b>Blank</b> Standard	<b>TCDR4</b> (4 inch) <b>TCDR6</b> (6 inch) <b>TCDR8</b> (8 inch) <b>TCDR10</b> (10 inch) (Round Trims)	<b>TCDR4 WW</b> <b>TCDR6 WW</b>  (Round Wall Wash)
	<b>WS2</b> (Wattage Selectable) 27W / 34W / 34W	<b>CCTS2</b> (Color Temp. Selectable) 3000K / 3500K / 4000K		<b>EB</b> Emergency Battery Backup	<b>TCDS4</b> (4 inch) <b>TCDS6</b> (6 inch) (Square Trims)	<b>TCDS4 WW</b> <b>TCDS6 WW</b> (Square Wall Wash)

Enter configuration:

Example: **LED ENGINE:** TCDE-WS1-CCTS2-Y / **TRIM:** TCDS4-WW

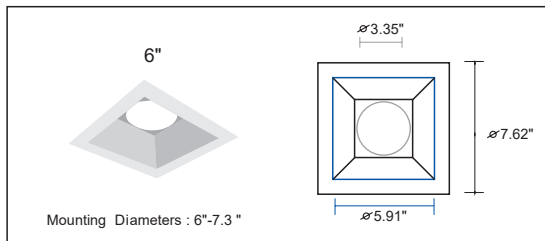
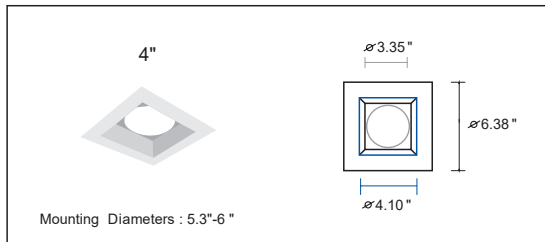
Dimensions and values shown are nominal. LuminosoLED continually works to improve products and reserves the right to make changes which may alter the performance or appearance of products.

**PERFORMANCE DATA**

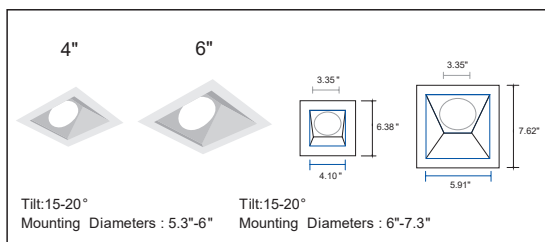
Model	Wattage	Selectable CCT		
		3000K	4000K	5000K
TCDE	10W	65 lm/w 650lm	80 lm/w 800lm	70 lm/w 700lm
	15W	70 lm/w 1,050lm	85 lm/w 1,275lm	75 lm/w 1,125lm
	<b>20W</b>	70 lm/w 1,400lm	80 lm/w 1,600lm	70lm/w 1,400lm

Model	Wattage Selectable	Selectable CCT		
		3000K	3500K	4000K
TCDE-40	27W	85 lm/w 2,295lm	100 lm/w 2,700lm	90 lm/w 2,430lm
	34W	80 lm/w 2,720lm	95 lm/w 3,230lm	85 lm/w 2,890lm
	<b>40W</b>	75 lm/w 3,000lm	90 lm/w 3,600lm	80 lm/w 3,200lm

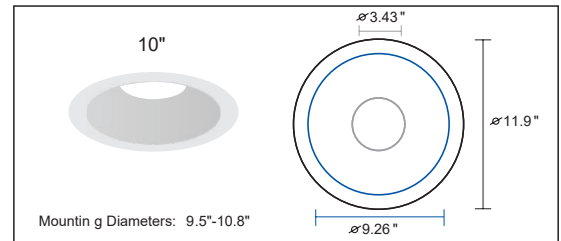
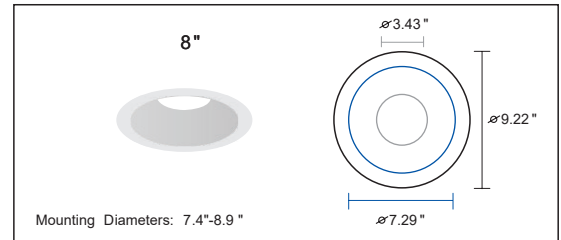
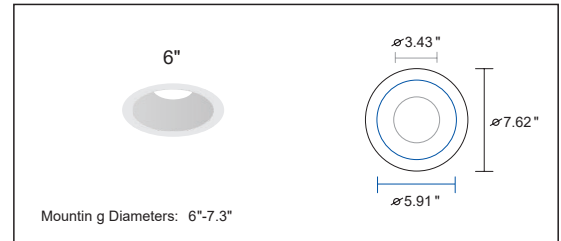
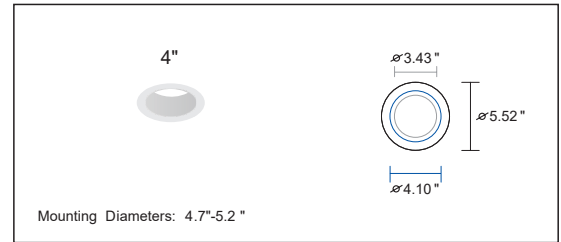
**SQUARE TRIMS**



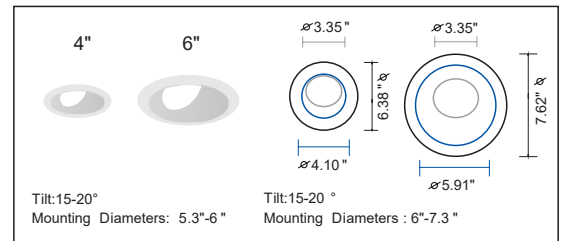
**SQUARE WALL WASH TRIMS**



**ROUND TRIMS**



**ROUND WALL WASH TRIMS**



**OPTIONAL NEW CONSTRUCTION FRAME KITS**

The Luminoso LED New Construction Frame kit is ideal for installing 4, 6, and 8 inch LED engine downlights in new construction projects. Crafted from durable cold-rolled steel, this frame is engineered to accommodate stud or joist spacings of up to 24 inches. It seamlessly integrates with standard 2x2 and 2x4 T-grid drop ceilings and comes equipped with adjustable and divisible bar hangers featuring pre-installed nails for added convenience.

