

Project		Date
Type		
Model		

## SBW 30W LED Wall Pack

### Turtle Friendly

### Features & Benefits

#### 01. HOUSING

- Die cast aluminum housing.
- Modular design allows for easy installation, replacement and maintenance.
- This design also creates a chimney effect which provides exceptional thermal management.
- IK08 rated.

#### 02. FINISH

- Corrosion resistant polyester powder painted 100µm thickness.
- Meets a 1000-hour salt spray certification per ASTM B117/ ISO 9227:2012.
- Standard colors: Silver, Black, Bronze and White.
- Customized colors are available.

#### 03. LED / OPTICAL ASSEMBLY / FWC / IDA

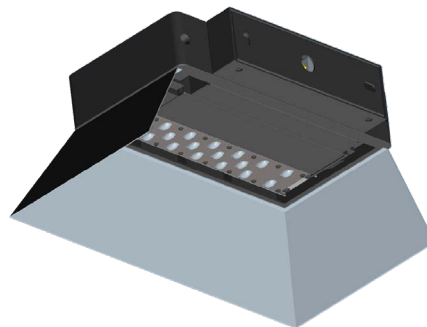
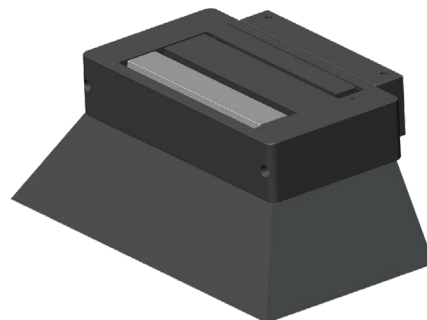
- Each PCB are mounted with a TVS (Transient Voltage Suppressors) to protect the LEDs from voltage transients induced by lightning and other transient voltage events.
- High-uniformity LED optics are constructed of durable optical polycarbonate that is impact and UV resistant.
- The metal plate provides double protection for the LED light engine and prolongs LED optics life.
- Over 15 optical lenses are available for virtually any application.
- Each LED module are 100% tested prior to assembly which is IP67 rated.
- FWC Certification, AMBER light Turtle friendly available, 30W only.
- IDA Certification requires 30K CCT or lower and for fixture to be fixed mount at 90°

#### 04. MOUNTING

- Wall mount

#### 05. ELECTRICAL / KEY COMPONENTS / CONTROLS

- 120-277VAC and 347-480VAC available.
- Surge protection to 20kV/10kA per ANSI/IEEE C62.41.2-2002 available.
- High quality LEDs, driver and components, e.g. MOLEX, WAGO connectors.
- Multiple lighting control options are available, e.g. DALI, 1-10V.



### ORDER INFORMATION

EXAMPLE: SBW-15-30W-40K-3M1-Y-TS-BK

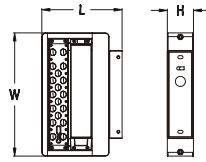


Series	Mount	Wattage	CCT	Optics	Voltage	Shielding	Finish
SBW	15=Wall Mount	30W	AM = Amber	2M1 3M1 3L1 4M1 4S1 5M1 5L1	T5U T5V T5W T5S T5X T5D	Y = 120-277V HV = 347-480V**	TS = Turtle Shield SV = Silver BZ = Bronze** BK = Black** WH = White**

Enter configuration:

\*\* Special Order

# SBW-30W Turtle Friendly Dimensions / Performance



Model	SBW-30 / SBW-40
LED Modules	1
LEDs	18
EPA(sq.ft.)	0.283

Net Weight	4.19kg(9.24lbs)
Gross Weight	4.83kg(10.65lbs)
Product Dimensions	215x330x70mm 8.46"x12.99"x2.76"
Carton Dimensions	305x415x160mm 12.01"x16.34"x6.3"

Model No.	System Power	Voltage	Drive Current	Luminous Flux		Efficacy (lm/W)
				AMBER		
SBW-30	31W	120-277VAC	530mA	2,728		88