

Project		Date
Type		
Model		

Features & Benefits

01. HOUSING

- Die cast aluminum housing.
- Modular design allows for easy installation, replacement and maintenance.
- This design also creates a chimney effect which provides exceptional thermal management.
- IK08 rated.

02. FINISH

- Corrosion resistant polyester powder painted 100µm thickness.
- Meets a 1000-hour salt spray certification per ASTM B117/ ISO 9227:2012.
- Standard colors: Silver, Black, Bronze and White.
- Customized colors are available.

03. LED / OPTICAL ASSEMBLY / FWC / IDA

- Each PCB are mounted with a TVS (Transient Voltage Suppressors) to protect the LEDs from voltage transients induced by lightning and other transient voltage events.
- High-uniformity LED optics are constructed of durable optical polycarbonate that is impact and UV resistant.
- The metal plate provides double protection for the LED light engine and prolongs LED optics life.
- Over 20 optical lenses are available for virtually any application.
- Each LED module are 100% tested prior to assembly which is IP67 rated.
- FWC Certification, AMBER light Turtle friendly.
- IDA Certification requires fixture to be fixed mount at 90°

04. MOUNTING

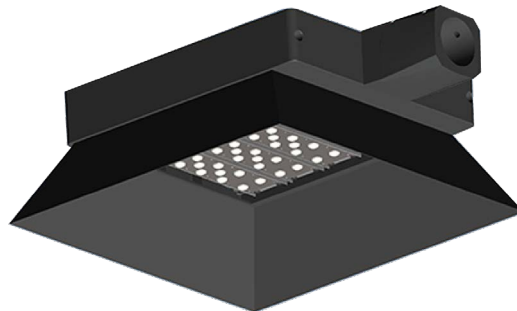
- Side-entry or post-top mounting.
- Tenon mount 90 degree.
- Adjustable for 1 5/8-2 3/8" (42mm-60mm) O.D. tenon.
- Interchangeable with standard brackets.

05. ELECTRICAL / KEY COMPONENTS / CONTROLS

- 120-277VAC and 347-480VAC available.
- Surge protection to 20kV/10kA per ANSI/IEEE C62.41.2-2002 available.
- High quality LEDs, driver and components, e.g. MOLEX, WAGO connectors.
- Multiple lighting control options are available, e.g. DALI, 1-10V.

SBK Series LED Roadway Light

Turtle Friendly



Horizontal Tenon



ORDER INFORMATION

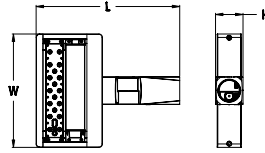
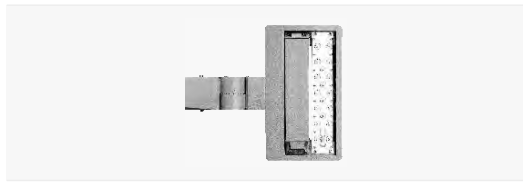
EXAMPLE: SBK-24-120W-AM-3M1-Y-TS-SV



Series	Mount	Wattage	CCT	Optics	Voltage	Shielding	Finish
SBK	24=Horizontal Tenon	30W 60W 90W 120W 150W 180W 210W 240W 270W 300W	AM = Amber	2M1 T5U 3M1 T5V 3L1 T5W 4M1 T5S 4S1 T5X 5M1 T5D 5L1	Y = 120-277V HV = 347-480V**	TS = Turtle Shield	SV = Silver BZ = Bronze** BK = Black** WH = White**

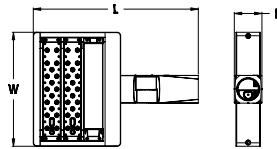
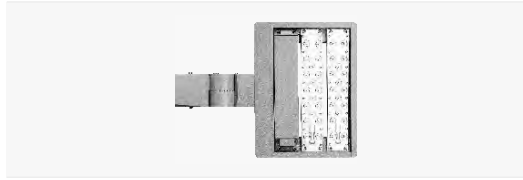
Enter configuration:

** Special Order



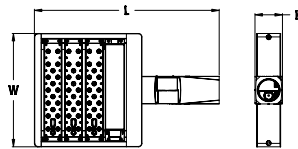
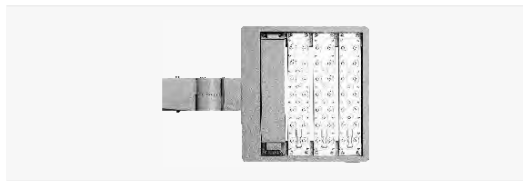
Model	SBK30	Net Weight	4.98kg(10.98lbs)
LED Modules	1	Gross Weight	5.97kg(13.16lbs)
LEDs	18	Product Dimensions	15.94"x12.99"x2.76"
EPA(sq.ft.)	0.283	Carton Dimensions	14.37"x16.34"x6.30"

Model No.	System Power	Voltage	Drive Current	Luminous Flux		Efficacy (lm/W)
				AMBER		
SBK30	31W	120-277VAC	530mA	2,728lm		88



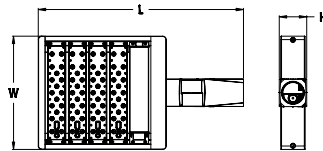
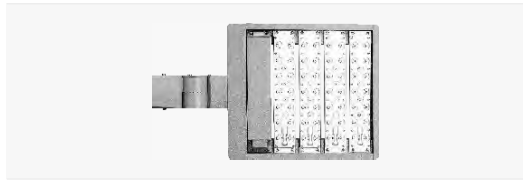
Model	SBK-60 / SBK-80 (347-480V)**	Net Weight	5.79kg(12.76lbs)
LED Modules	2	Gross Weight	6.67kg(14.70lbs)
LEDs	36	Product Dimensions	18.31"x12.99"x2.76"
EPA(sq.ft.)	0.308	Carton Dimensions	16.73"x16.34"x6.30"

Model No.	System Power	Voltage	Drive Current	Luminous Flux		Efficacy (lm/W)
				AMBER		
SBK-60	61W	120-277VAC	530mA	5,368lm		88
SBK-80**	78W	347-480VAC**	700mA	6,786lm		87



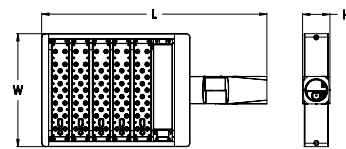
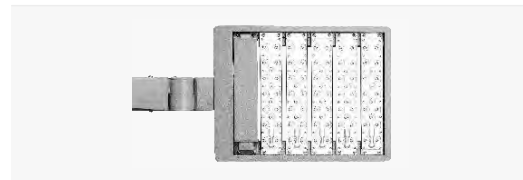
Model	SBK-90 / SBK-120 (347-480V)**	Net Weight	6.90kg(15.21lbs)
LED Modules	3	Gross Weight	8.03kg(17.70lbs)
LEDs	54	Product Dimensions	20.67"x12.99"x2.76"
EPA(sq.ft.)	0.336	Carton Dimensions	19.09"x16.34"x6.30"

Model No.	System Power	Voltage	Drive Current	Luminous Flux		Efficacy (lm/W)
				AMBER		
SBK-90	87W	120-277VAC	530mA	7,656lm		88
SBK-120**	118W	347-480VAC**	700mA	10,266lm		87



Model	SBK-120 / SBK-160 (347-480V)**	Net Weight	7.79kg(17.17lbs)
LED Modules	4	Gross Weight	8.72kg(19.22lbs)
LEDs	72	Product Dimensions	23.03"x12.99"x2.76"
EPA(sq.ft.)	0.368	Carton Dimensions	21.46"x16.34"x6.30"

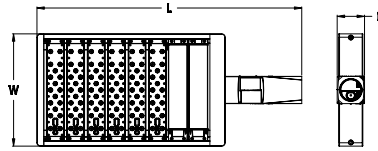
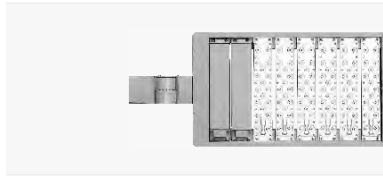
Model No.	System Power	Voltage	Drive Current	Luminous Flux		Efficacy (lm/W)
				AMBER		
SBK-120	110W	120-277VAC	530mA	9,680lm		88
SBK-160**	156W	347-480VAC**	700mA	13,572lm		87



Model	SBK-150W	Net Weight	8.68kg(19.14lbs)
LED Modules	5	Gross Weight	9.41kg(20.75lbs)
LEDs	90	Product Dimensions	25.39"x12.99"x2.76"
EPA(sq.ft.)	0.403	Carton Dimensions	23.82"x16.34"x6.30"

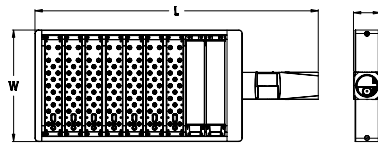
Model No.	System Power	Voltage	Drive Current	Luminous Flux		Efficacy (lm/W)
				AMBER		
SBK-150	141W	120-277VAC	530mA	12,408lm		88

SBK Series Dimensions / Performance



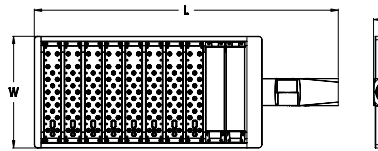
Model	SBK-180 / SBK-240 (347-480V)**	Net Weight	10.63kg(23.44lbs)
LED Modules	6	Gross Weight	11.80kg(26.01lbs)
LEDs	108	Product Dimensions	30.12"x12.99"x2.76"
EPA(sq.ft.)	0.477	Carton Dimensions	28.54"x16.34"x6.30"

Model No.	System Power	Voltage	Drive Current	Luminous Flux		Efficacy (lm/W)
				AMBER		
SBK-180	172W	120-277VAC	530mA	14,964lm		87
SBK-240**	234W	347-480VAC**	700mA	20,592lm		88



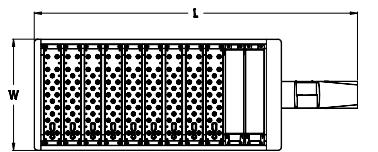
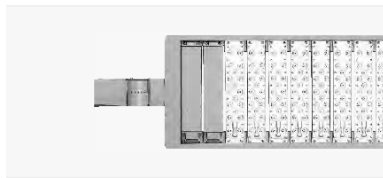
Model	SBK-210 / SBK-280 (347-480V)**	Net Weight	11.24kg(24.78lbs)
LED Modules	7	Gross Weight	12.48kg(27.51lbs)
LEDs	126	Product Dimensions	32.48"x12.99"x2.76"
EPA(sq.ft.)	0.517	Carton Dimensions	30.91"x16.34"x6.30"

Model No.	System Power	Voltage	Drive Current	Luminous Flux		Efficacy (lm/W)
				AMBER		
SBK-210	202W	120-277VAC	530mA	17,776lm		88
SBK-280**	274W	347-480VAC**	700mA	23,838lm		87



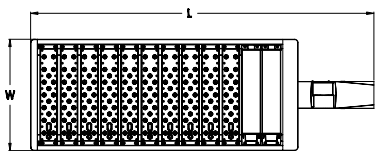
Model	SBK-240 / SBK-310 (347-480V)**	Net Weight	11.95kg(26.35lbs)
LED Modules	8	Gross Weight	13.54kg(29.85lbs)
LEDs	144	Product Dimensions	34.84"x12.99"x2.76"
EPA(sq.ft.)	0.556	Carton Dimensions	33.27"x16.34"x6.30"

Model No.	System Power	Voltage	Drive Current	Luminous Flux		Efficacy (lm/W)
				AMBER		
SBK-240	228W	120-277VAC	530mA	19,836lm		87
SBK-310**	310W	347-480VAC**	700mA	27,280lm		88



Model	SBK-270	Net Weight	12.94kg(28.53lbs)
LED Modules	9	Gross Weight	14.88kg(32.80lbs)
LEDs	162	Product Dimensions	37.20"x12.99"x2.76"
EPA(sq.ft.)	0.596	Carton Dimensions	35.63"x16.34"x6.30"

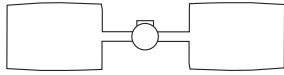
Model No.	System Power	Voltage	Drive Current	Luminous Flux		Efficacy (lm/W)
				AMBER		
SBK-270	256W	120-277VAC	530mA	22,528lm		88



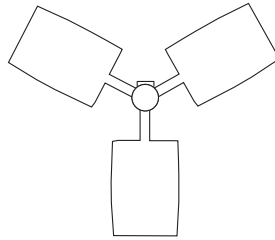
Model	SBK-300	Net Weight	13.93kg(30.71lbs)
LED Modules	10	Gross Weight	16.22kg(35.76lbs)
LEDs	180	Product Dimensions	39.57"x12.99"x2.76"
EPA(sq.ft.)	0.638	Carton Dimensions	37.99"x16.34"x6.30"

Model No.	System Power	Voltage	Drive Current	Luminous Flux		Efficacy (lm/W)
				AMBER		
SBK-300	283W	120-277VAC	530mA	24,338lm		86

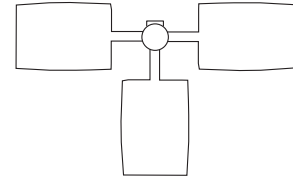
Arm Mount 2 at 180°



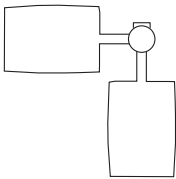
Triple¹
Arm Mount 3 at 120°



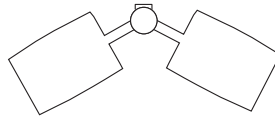
Triple²
Arm Mount 3 at 90°



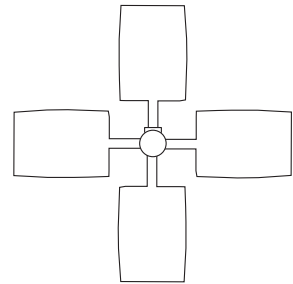
Arm Mount 2 at 90°



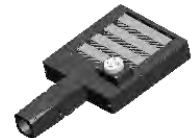
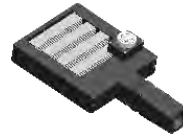
Arm Mount 2 at 120°



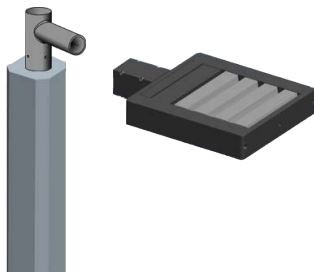
Arm Mount 4 at 90°



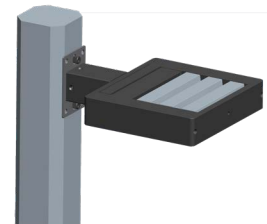
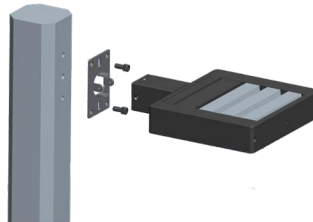
3/5/7 - pin NEMA Receptacle+Shorting Cap/Photocell



Tenon Bracket sold separately



Wall Bracket included



	ISO Plot 		ISO Plot
2M1 Type II Medium		T5W Average beam angle 40°	
3M1 Type III Medium		T5S Average beam angle 60°	
3L1 Type III Long		5M1 Average beam angle 90°	
4S1 Type IV Short		5L1 Average beam angle 120°	
T4M Type IV Medium		T5X Average beam angle 150°	
T5U Average beam angle 10°		T5D Diffuser	
T5V Average beam angle 25°			