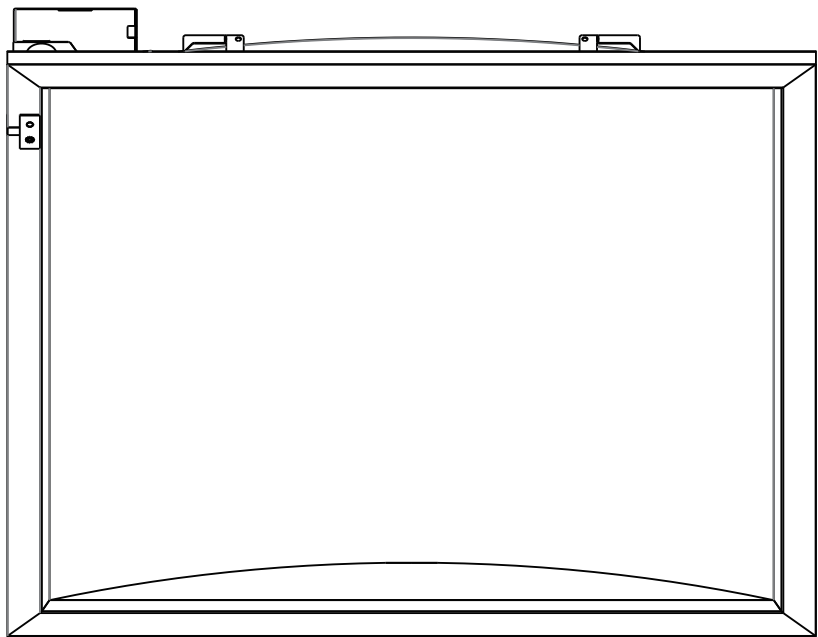


LMC Series Troffer

User Manual



All the pictures are just for reference
and we have the final explanation rights

Included Parts

Instruction manual x1

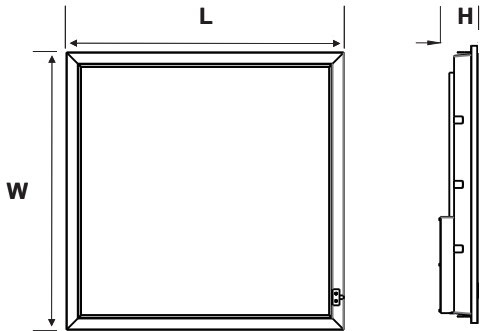
Safety Information

CAUTION! Risk Of Electric Shock

Turn off all power prior to installation by switching off circuit breaker or removing fuse at fuse box.

- This product should be installed by a fully certified electrician in accordance with relevant federal, state and local building and electrical codes

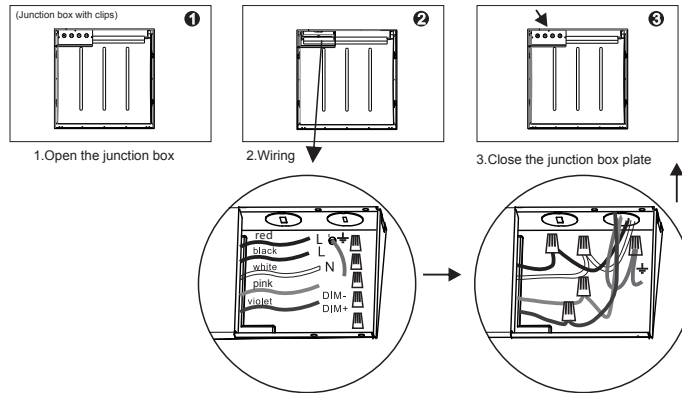
Size



SIZE	L X W X H (mm)	L X W H (Inch)
2FT X 2 FT	602 X 602 X 50.8 mm	23.7 X 23.7 X 2"
2FT X 4 FT	602 X 1209X 50.8 mm	23.7 X 47.6 X 2"

Wiring

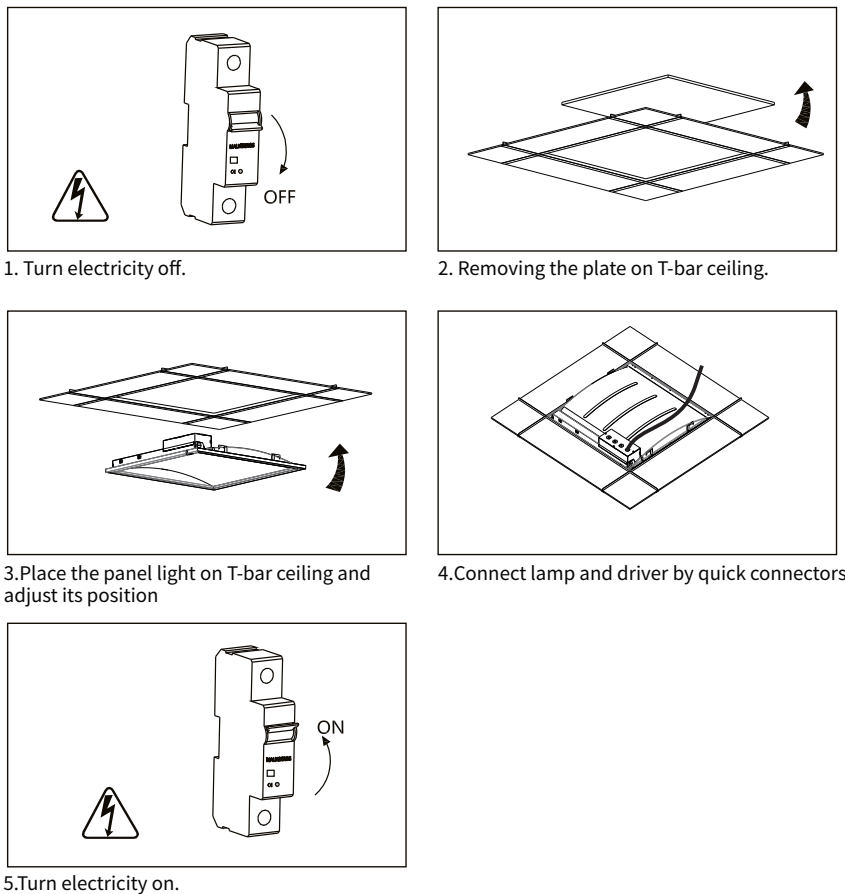
● 0-10V dimming



Notes

1. Indoor lighting only.
2. Before installation, ensure the LED panel is not damaged.
3. Don't stare at the LED luminous surface for long time.
4. Keep away from children, and ensure working electrical apparatus inaccessible to them.
5. No packages accessible to children, because they might be choked for playing, or eating the small accessories.
6. No covering, be away from re or high-temperature substance.
7. Manufacturer reserves the right to offer no replacement or warranty to the led panels dissembled or repaired by users themselves.
8. Cut off power before cleaning the panels with dry cloth, use no chemical or corrosive substance.
9. Cut off power before installation.
10. The light source of this luminaire is not replaceable; when the light source reaches its end of life the whole luminaire shall be replaced.

Recessed



Adjusting CCT & Wattage

