

Project		Date
Type		
Model		

PAK Series LED Wall Pack

Turtle Friendly

Features & Benefits

01. HOUSING

- Die cast aluminum housing.
- Modular design allows for easy installation, replacement and maintenance.
- IK08 rated.

02. FINISH

- Corrosion resistant polyester powder painted 100µm thickness.
- Meets a 1000-hour salt spray certification per ASTM B117/ ISO 9227:2012.
- Standard colors: Silver, Black, Bronze and White.
- Customized colors are available.

03. LED / OPTICAL ASSEMBLY / FWC / IDA

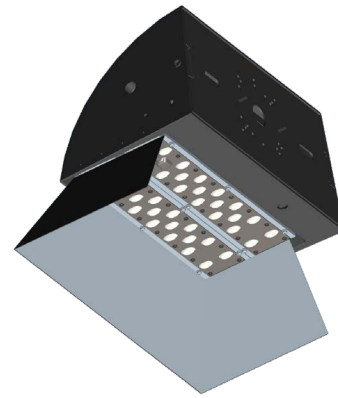
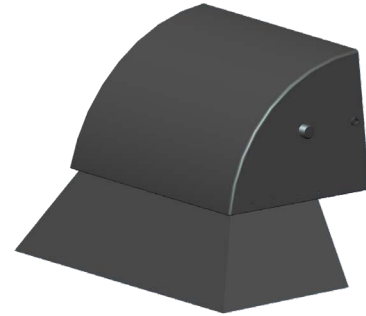
- Each PCB are mounted with a TVS (Transient Voltage Suppressors) to protect the LEDs from voltage transients induced by lightning and other transient voltage events.
- High-uniformity LED optics are constructed of durable optical polycarbonate that is impact and UV resistant.
- The metal plate provides double protection for the LED light engine and prolongs LED optics life.
- Over 20 optical lenses are available for virtually any application.
- Each LED module are 100% tested prior to assembly which is IP67 rated.
- FWC Certification, AMBER light Turtle friendly available, 30W & 40W only.
- IDA Certification requires 30K CCT or lower and for fixture to be fixed mount at 90°

04. MOUNTING

- Wall mount

05. ELECTRICAL / KEY COMPONENTS / CONTROLS

- 120-277VAC and 347-480VAC available.
- Surge protection to 20kV/10kA per ANSI/IEEE C62.41.2-2002 available.
- High quality LEDs, driver and components, e.g. MOLEX, WAGO connectors.
- Multiple lighting control options are available, e.g. DALI, 1-10V.
- Emergency Power Supply (EPS) available.



ORDER INFORMATION

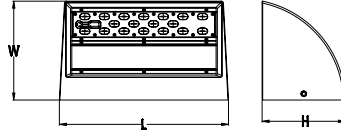
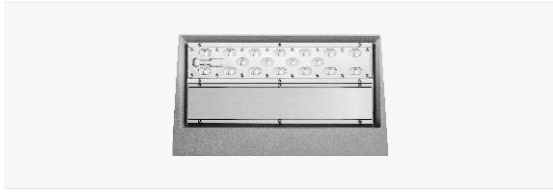
EXAMPLE: PAK-15-40W-AM-3M1-Y-TS-BK



Series	Mount	Wattage	CCT	Optics	Voltage	Shielding	Finish
PAK	15=Wall Mount	30W 40W	AM = Amber	2M1 3M1 3L1 4M1 4S1	Y = 120-277V HV = 347-480V**	TS = Turtle Shield	SV = Silver BZ = Bronze** BK = Black** WH = White**

Enter configuration:

** Special Order



Model	PAK-30 / PAK-40
LED Modules	1
LEDs	18
EPA(sq.ft.)	0.648

Net Weight	5.76kg(12.70lbs)
Gross Weight	6.32kg(13.93lbs)
Product Dimensions	12.80"x7.48"x6.30"
Carton Dimensions	16.34"x9.65"x9.06"

Model No.	System Power	Voltage	Drive Current	Luminous Flux		Efficacy (lm/W)
				AMBER		
PAK-30	31W	120-277VAC	530mA		2,728	88
PAK-40	41W	120-277VAC	530mA		3,608	88