

6" Round Smooth Downlight

Project: _____
 Type: _____
 Model# _____

DESCRIPTION

6" LED Round Downlight, DLE 6 is compatible with most 6" standard recessed new construction and remodel housings. The Retrofit Kit comes with an E26 medium screw-base Edison adapter for easy installation into standard incandescent sockets.

PRODUCT SPECIFICATIONS

- White painted spun aluminum body.
- Oversized trim ring constructed from one-piece spun aluminum body.
- Torsion spring mounting accessories are designed to accommodate most 5" and 6" standard and shallow housings.
- E26 medium screw-base Edison adapter provides easy installation into Incandescent housings.
- (GU10 and GU24 socket adapter available - sold separately)

LED LIGHT ENGINE

- Protected LED driver performs at 120V.
- Dimming down to 5% with most TRIAC dimmers.
- CCT: 3000K, 4000K, 5000K available
- Operating Temperature: -15°F to 104°F
- Long life LED chips guaranteed up to 50,000 hours.

LISTINGS

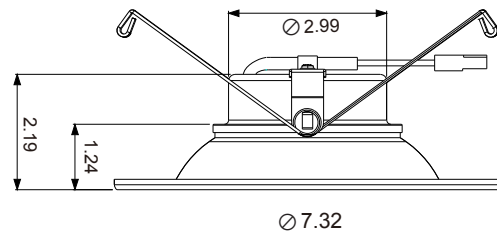
- ETL classified
- Wet locations (Not suitable for saline conditions)
- RoHS compliances
- Tested in accordance with IESNA LM79 & LM80
- Compatible dimmers, SCL-153P, CTCL-153P, DVCL-153P, MACL-153M

PERFORMANCE DATA

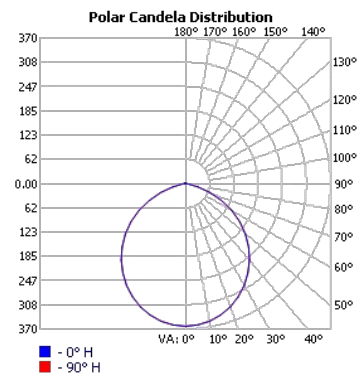
CCT	Lumens	Watts	CRI	Input Voltage	Frequency
3000K	920 Lm				
4000K	960 Lm	15W	90	120V	50/60Hz
5000K	970 Lm				



DIMENSIONS



PHOTOMETRIC

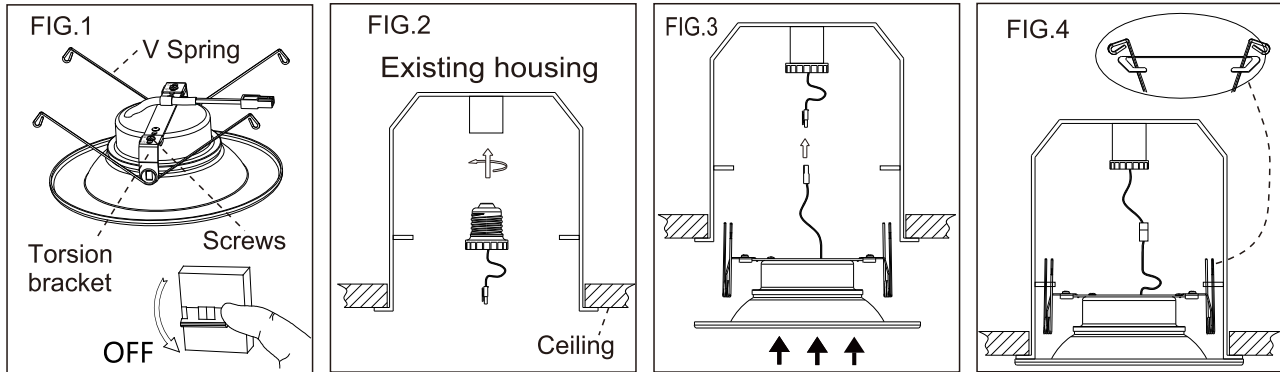


Series	Reflector	Watts	CCT	Voltage	Finish
DLE-6	RS = Round Smooth	15W	30K = 3000K 40K = 4000K 50K = 5000K	Z = 120VAC	WH = White

Enter configuration: _____

/ Example: DLE-6-RS-15W-30K-Z-WH

5-6 inch LED Downlight



WARNING : Risk of fire or electric shock. Install these kits only in luminaires that have the construction features and dimensions shown in the illustrations herein(6" recessed housings) Confirm this before installation by checking the interior of the housing for a manufacturer's part number and specifications; or measure the diameter of the housing. The recessed housing must have a minimum measured inside diameter(opening) of 6 1/4 ".

Do not make or alter any open holes in a wiring enclosure nor in any electrical components during kit installation!

WARNING : Risk of fire or electric shock. Kit installation requires knowledge of recessed lighting luminaires electrical systems. If not qualified, do not attempt installation. Contact a qualified electrician.

Do not use these products in luminaires located where elevated ambient temperatures exist.

WARNING : Risk of fire or electric shock. The electrical rating of this product is 120V Ac. The installer must determine whether power supply is 120V AC at the luminaire before installation. (120V/277V Ac 50~60Hz is available if 120V/277V is indicated on caution label)

WARNING : Risk of fire or electric shock. Luminaire's wiring, ballast(s), or other electrical parts may be damaged when drilling for installation of reflector kit hardware. If drilling is required in any installation, check for enclosed wiring and components and be careful to protect them from any harm. To prevent wiring damage or abrasion, do not expose wiring to edges of sheet metal or other sharp objects.

THIS PRODUCT MUST BE INSTALLED IN ACCORDANCE WITH THE APPLICABLE INSTALLATION CODE BY A PERSON FAMILIAR WITH THE CONSTRUCTION AND OPERATION OF THE PRODUCT AND THE HAZARDS INVOLVED.

Each fixture includes a socket adapter for use with a standard 120V medium (E26) base socket adapter, a pair of torsion spring clips. See Figure 2

