

INSTALLATION INSTRUCTIONS

READ AND FOLLOW ALL SAFETY INSTRUCTIONS, SAVE THIS INSTRUCTIONS AND DELIVER TO OWNER AFTER INSTALLATION.

WARNING

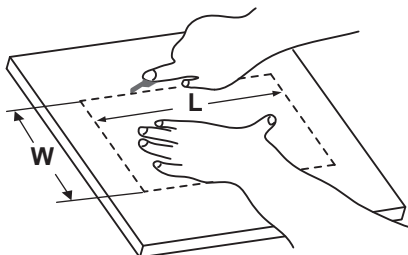
1. Risk of electric shock-never connect to, disconnect from, or service while equipment is energized.
2. Failure to follow these instruction and warnings may result in death, serious injury or significant property damage.

For you protection, read and follow these warnings and instructions carefully before installing or maintaining this equipment. These instructions do not attempt to cover all installation and maintenance situations.

- All service shall be performed by qualified service electrician. This product must be installed and maintained in accordance with the applicable installation codes by a person familiar with the construction & operation of the product and the hazards involved.
- This product must be installed in accordance with the applicable installation codes and ordinance.
- Disconnect AC power before wiring or servicing
- Consult your local building code for approved wiring and installation.
- Do not let power supply cord touch hot surface.
- Do not mount near gas or electric heater.
- Equipment should be mounted in locations unauthorized personnel readily be subjected to tampering for other than intended use.
- Connect to an AC voltage as recommended on the product label of this equipment.
- The battery is not be fully charged, it will be fully charged after 24 hours of connect the AC power.
- Battery pack should be charged for 24 hours every 6 months during storage.

INSTALLATION STEPS

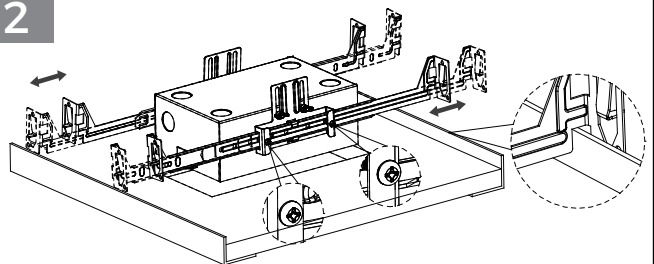
1



L x W=0.66 x 0.42 ft'

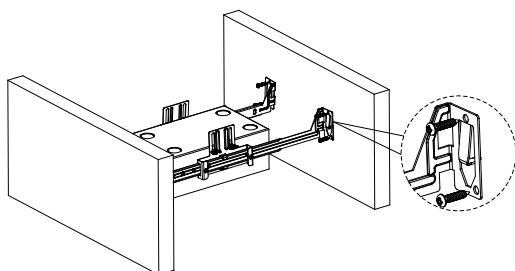
Cut the Rectangle hole with the size of 0.66 x 0.42ft' out of the ceiling are or tile,it is recommended for the cutting to be done on the ground,where possible.

2



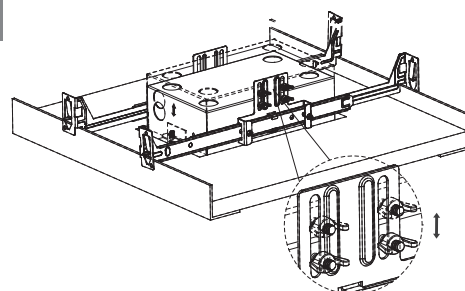
Adjust the length of the crossarm bracket until it fits into the metal keel of the ceiling.

3

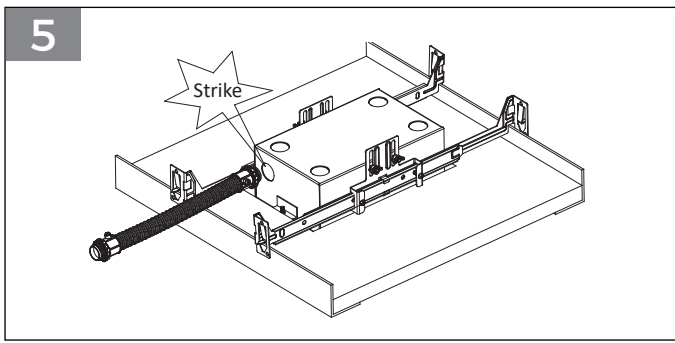


If it is a wooden keel, adjust the bracket to the appropriate position and fix it to the wooden board with screws through the holes in the crossarm.

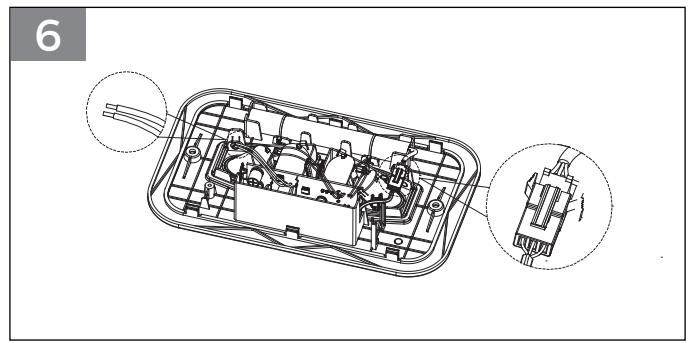
4



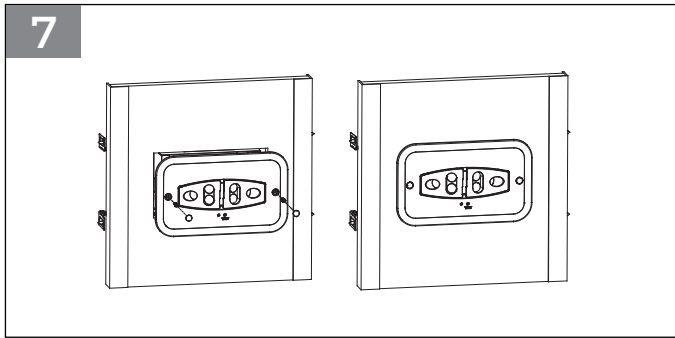
Adjust the height of the junction box by selecting the butterfly screws until the bottom of the junction box is aligned with the ceiling height



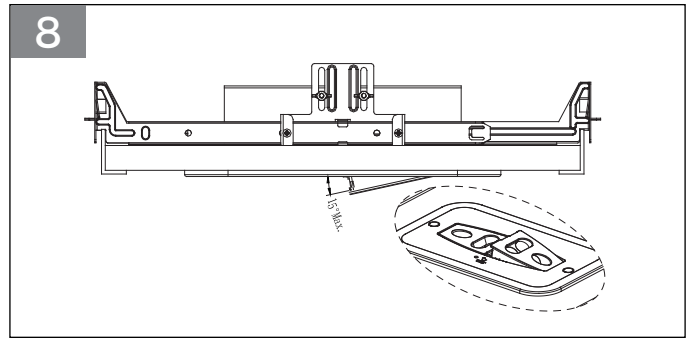
Strike open the wiring hole on the junction box that is suitable for the wiring line, pass the line through the wiring conduit and then fix it on the junction box.



Connect the wire on the emergency battery with the lamp the black wire to the live wire, and the white wire to the neutral wire.



Install the panel on the surface of the junction box and fix the panel and the junction box with screws.



Select the appropriate lighting area by adjusting the opening and closing angle of the lamp head on the panel.

TEST MODES

Self Test

The integrated Self-Test/Diagnostic circuitry will automatically conducts monthly 3 minutes and annual 90 minutes test to verify proper emergency capability per Life Safety Code requirements. NFPA 101 Life Safety Code Outlines the following schedule:

- **Monthly**- During AC mode, the fixture conducts a 3 minutes self-discharge test every 30 days.
- **Annually**- During AC mode, the fixture conducts a 90 minutes self-discharge test every 365 days.

TEST BUTTON		
Icon	Explain	Function
	Press once within 2 seconds	Run 10 seconds duration test
	Press twice within 2 seconds	Run 30 seconds duration test
	Press thrice within 2 seconds	Run 90 minutes duration test
	Press once and wait >2S then press again	Light turned off. Indicator will turn green and back to charging mode
	Under emergency mode. Long press the test button for >3s	Turn off the light
NOTE: The manual test function needs to connect the battery and plug in the AC power for use.		

INDICATOR		
Icon	Explain	Function
	Slow Flash with green color	Discharging/Emergency mode
	With green color all the time	Charging battery
	The indicator light is off	The battery is fully charged
	Fast Flash with green color	Failure
NOTE: When the fault is cleared, long press the test button for 2 seconds. The led indicator		