

Project		Date
Type		
Model		

CLB Series LED High Bay

Description

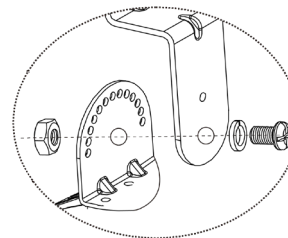
Introducing the Luminoso CLB 55W - a sleek, low-profile LED low bay lighting solution. Perfect for replacing T8 and T5 fixtures, it offers wide distribution for gymnasiums, warehouses, and manufacturing areas. With 50,000+ hours of operation and over 65% wattage reduction, it's truly revolutionary. Available in 55 Watts with a lumen range from 6,500 to 7,200.

Features

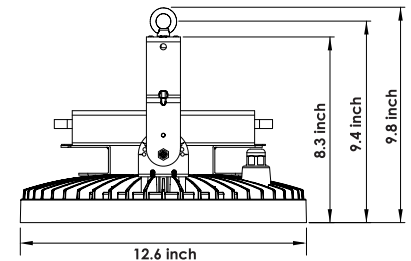
- Efficacy: 118-130 Lm/W
- Delivered Lumens Output: 7,200 (Clear Lens)
- Delivered Lumens Output: 6,500 (Frosted Lens)
- Power: 55W
- CRI: 80
- CCT: 4000K, 5000K
- Input Voltage: 120 - 277 VAC
- Frequency: 50-60Hz
- Beam Angle: 120°
- Warranty: 5 Years
- Standard Lifetime: designed to L70 minimum 50,000 Hours
- IP Rating: IP65
- Dimmable: 1 - 10V



Adjustable



Dimensions



ORDER INFORMATION

EXAMPLE: CLB-55W-40K-Y-WH-FR



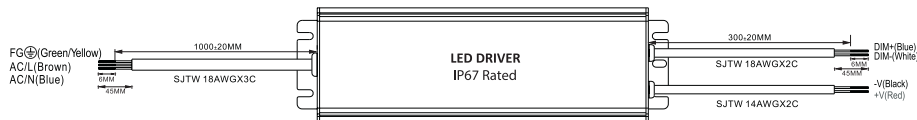
Series	Wattage	CCT	Voltage	Finish	Lens
CLB	55W 55 Watts	40K 4000K	Y 120-277V	WH White	FR Frosted
		50K 5000K			

Enter configuration: _____

Series / Performance

Series No.	CLB-55W
Power	55W
Lumens: Clear/Frosted lens	7,200 / 6,500
Efficacy	130 / 118 Lm/W
Input current 120/277V	0.45/0.19 Amps
Input	120-277V AC

LED Driver 1-10V Dimming



Built-in 3 in 1 dimming function, IP67 rated. Output constant current level can be adjusted through output cable by connecting a resistance or 1 ~ 10Vdc or 10V PWM signal between DIM+ and DIM-.

Please DO NOT connect "DIM-" to "-V".

Reference resistance value for output current adjustment (Typical)

Resistance value	Single driver	10KΩ	20KΩ	30KΩ	40KΩ	50KΩ	60KΩ	70KΩ	80KΩ	90KΩ	100KΩ	OPEN
	Multiple drivers (Require quantity for synchronized dimming operation)	10KΩ/N	20KΩ/N	30KΩ/N	40KΩ/N	50KΩ/N	60KΩ/N	70KΩ/N	80KΩ/N	90KΩ/N	100KΩ/N	----
Percentage of rated current		10%	20%	30%	40%	50%	60%	70%	80%	90%	100%	95%~108%

1 ~ 10V dimming function for output current adjustment (Typical)

Dimming value	1V	2V	3V	4V	5V	6V	7V	8V	9V	10V	OPEN
Percentage of rated current	10%	20%	30%	40%	50%	60%	70%	80%	90%	100%	95%~108%

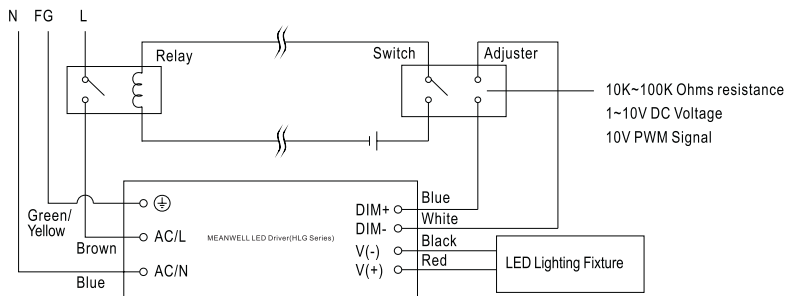
10V PWM signal for output current adjustment (Typical): Frequency range : 100Hz ~ 3KHz

Duty value	10%	20%	30%	40%	50%	60%	70%	80%	90%	100%	OPEN
Percentage of rated current	10%	20%	30%	40%	50%	60%	70%	80%	90%	100%	95%~108%

Using the built-in dimming function on B-type model can't turn the lighting fixture totally dark. Please refer to the connection method below to achieve 0% brightness of the lighting fixture connecting to the LED power supply unit.

Direct connecting to LEDs is suggested, but is not suitable for using additional drivers.

Dimming connection diagram for turning the lighting fixture ON/OFF :



Using a switch and relay can turn ON/OFF the lighting fixture.

1. Output constant current level can be adjusted through output cable by connecting a resistance or 1~10Vdc or 10V PWM signal between DIM+ and DIM-.
2. The LED lighting fixture can be turned ON/OFF by the switch.

Cylinder Shroud Option



Cylinder Shroud option (Made to order)