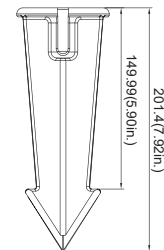
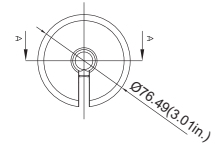
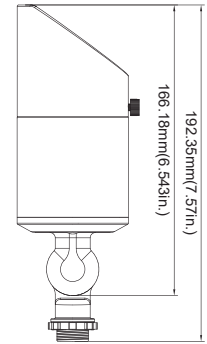
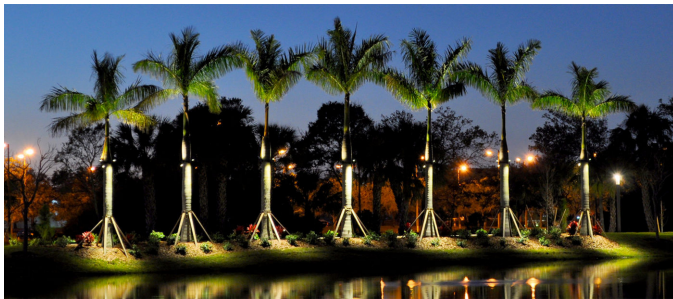


Project		Date
Type		
Model		

LLU Series LED Bullet Light

Specification Features

- Diecast aluminum profile for outdoor applications.
- Sealed aluminum casting thermally conducts LED heat to optimize performance and long life.
- Light engines are available in standard 3000K, 4000K and 5000K at (80 CRI) configurations.
- Scalable Lumen Packages from 230 to 650 Lumens.
- Polycarbonate UV coated optical lens provide outstanding performance, uniformity and glare control.
- Voltage: 12VAC
- IP66 Rated
- Suitable for operation in -40°F to 110°F ambient environments.
- Estimated 50,000-hour LED lifespan based on IES LM-80 results and TM-21 calculations.



ORDER INFORMATION

EXAMPLE: LLU-10W-X-30K-26-60D-BZ



Series	Wattage	Voltage	CCT	Mount	Optics	Finish
LLU	6W	X = 12V	30K = 3000K	26 = Swivel Bracket	25D = 25°	BZ = Bronze BK = Black
	10W		40K = 4000K		40D = 40°	
			50K = 5000K		60D = 60°	

Enter configuration:

** Special Order

Dimensions and values shown are nominal. LuminosoLED continually works to improve products and reserves the right to make changes which may alter the performance or appearance of products.

PERFORMANCE DATA

				3000K
WATTS	CRI	BEAM ANGLE	VOLTAGE	LUMENS
6W	80	25°	12VAC	480
		40°		450
		60°		330
10W		25°		600
		40°		560
		60°		420

ELECTRICAL DATA

Number Of Drivers	Driver Current (mA)	Nominal Power (W)	INPUT VOLTAGE (V)	CURRENT (Amps)
1	140	6	12	0.50
1	230	10	12	0.83

OPTICAL DISTRIBUTION

