

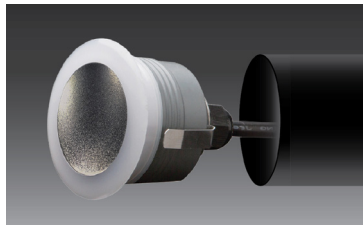
Project: _____

Type: _____

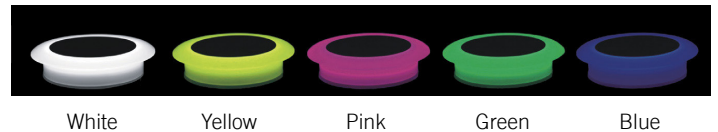
Model: _____

Features:

- HOUSING MATERIALS** | Die-casting dark gray powder coated aluminum. T=60-80 um. Adhesion of ISO class, 1.ASTM class 4B
- FRONT COVER / DIFFUSER** | Powder coated aluminum, Polycarbonate diffuser.
- LED** | SMD3030
- DIMMABLE** | Non dimmable
- MOUNTING SLEEVE** | ABS
- WATER-TIGHT CABLE GLAND** | IP67
- OPERATING TEMPERATURE** | -4°F to 113°F
- POWER CABLE** | H05RN-F 2X1.0mm² L=0.5m (24 Volts)
- FIXTURE IP/ IK Rating** | IP65 Rated / IK10

MOUNTING SLEEVE


RSZ


COLOR LENS OPTIONS


Example: RSZ-0L40K-X-SV



Series	Lumens (CCT)			Voltage	LENS COLOR	Finish
RSZ 2.6 Watts	0L20K 0L (2000K) 20 Lumens	0L30K 0L (3000K) 22 Lumens	0L40K 0L (4000K) 28 Lumens	X X = 24 Volts	WT White YW Yellow PK Pink GR Green BL Blue	BK Black WH White GR Graphite SV Silver BZ Bronze
				Requires remote 24V transformer.		

Enter configuration: _____

** Special Order

Dimensions and values shown are nominal. LuminoLED continually works to improve products and reserves the right to make changes which may alter the performance or appearance of products.

PERFORMANCE DATA

Series	RSV
Power	2.6W
Lumens	20 (20K) 22 (30K) 28 (40K)
IP Rating	IP65
Operating Temp.	-4°F to 104°F
Input	24V

DIMENSIONS

