

Project: _____

Type: _____

Model: _____

PRODUCT SPECIFICATIONS

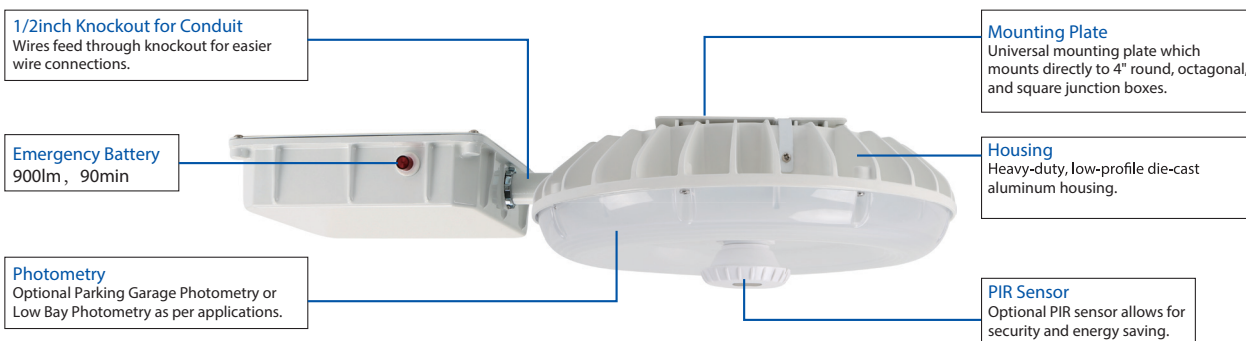
- Sealed die-casting profile for indoor and outdoor applications.
- Voltage is 120-277V.
- Lumen output from 3,500-11,600lm with efficacy up to 129lm/W.
- Optional Parking Garage Photometry or Low Bay Photometry as per applications.
- Increase energy saving with bi-level Motion sensor.
- Replacing 100W MH and 175W MH.
- Operating temperature is -40°F to 113°F
- UL and DLC premium qualified.
- 0-10V Dimming optional.



30W / 45W / 60W



90W



ORDER INFORMATION

EXAMPLE: ECPR2-14-45W-40K-PG-Y-BZ



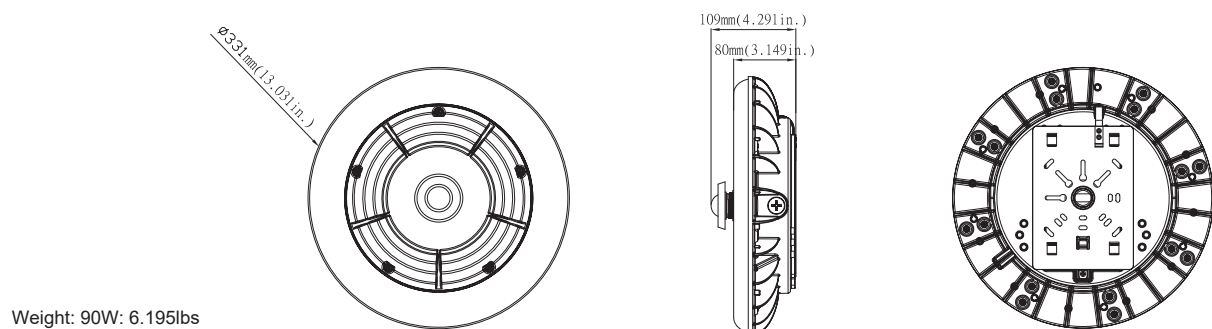
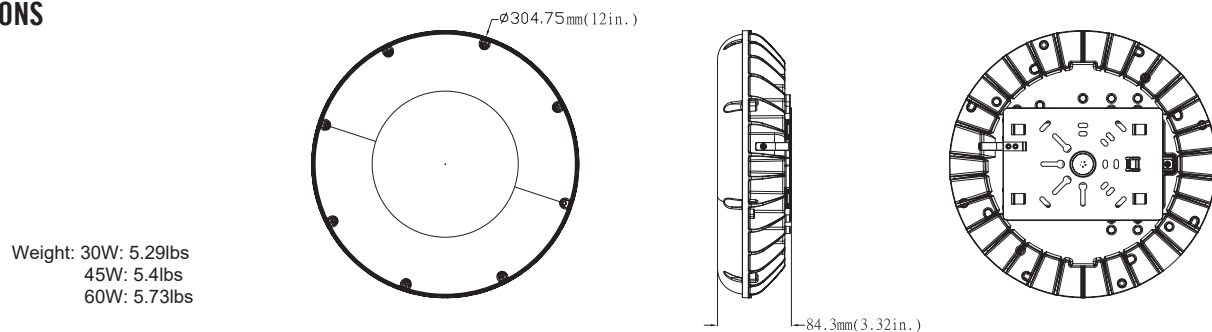
| Series | Mount | Wattage | CCT | Optics | Voltage | Finish | Motion Sensor | Emergency Back-up | Dimmable Option |
|--------------|------------------|---------|-----------|------------------------------------|------------|-----------|------------------|---|--------------------|
| ECPR2 Canopy | 14 Surface Mount | 30W | 40K 4000K | PG Parking Garage | Y 120-277V | BZ Bronze | Blank w/o Motion | Blank w/o Battery Backup | Blank Non Dimmable |
| | | 45W | 50K 5000K | LB Low Bay (Not available for 90W) | | WH White | MS Motion Sensor | EB Emergency Battery Backup (Not DLC w/ EB) | DIM Dimmable |
| | | 60W | | | | | | | |
| | | 90W | | | | | | | |

Enter configuration: _____

PERFORMANCE DATA

| SYSTEM WATTS | PHOTOMETRY | VOLTAGE | 4000K(70CRI) | | 5000K(70CRI) | |
|--------------|----------------|------------|--------------|---------|--------------|---------|
| | | | LUMENS | LPW | LUMENS | LPW |
| 30W | Parking Garage | 120-277VAC | 3,500lm | 117lm/W | 3,600lm | 120lm/W |
| | Low Bay | 120-277VAC | 3,800lm | 127lm/W | 3,800lm | 127lm/W |
| 45W | Parking Garage | 120-277VAC | 4,900lm | 109lm/W | 5,000lm | 111lm/W |
| | Low Bay | 120-277VAC | 5,500lm | 122lm/W | 5,500lm | 122lm/W |
| 60W | Parking Garage | 120-277VAC | 7,000lm | 117lm/W | 7,100lm | 118lm/W |
| | Low Bay | 120-277VAC | 7,600lm | 127lm/W | 7,600lm | 127lm/W |
| 90W | Parking Garage | 120-277VAC | 11,400lm | 127lm/W | 11,600lm | 129lm/W |

DIMENSIONS



PHOTOMETRY

